

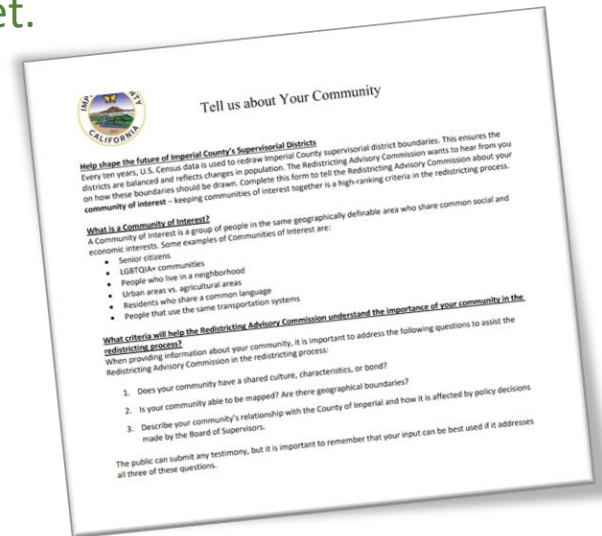
Imperial County 2021 Redistricting



Communities of Interest

Public Community of Interest Form

- Input can still be provided in public hearings or using our “Community of Interest” Worksheet.



Imperial County Seal

Tell us about Your Community

Help shape the future of Imperial County's Supervisorial Districts
Every ten years, U.S. Census data is used to redraw Imperial County supervisorial district boundaries. This ensures the districts are balanced and reflects changes in population. The Redistricting Advisory Commission wants to hear from you on how these boundaries should be drawn. Complete this form to tell the Redistricting Advisory Commission about your community of interest – keeping communities of interest together is a high-ranking criteria in the redistricting process.

What is a Community of Interest?
A Community of Interest is a group of people in the same geographically definable area who share common social and economic interests. Some examples of Communities of Interest are:

- Senior citizens
- LGBTQ+ communities
- People who live in a neighborhood
- Urban areas vs. agricultural areas
- Residents who share a common language
- People that use the same transportation systems

What criteria will help the Redistricting Advisory Commission understand the importance of your community in the redistricting process?
When providing information about your community, it is important to address the following questions to assist the Redistricting Advisory Commission in the redistricting process:

1. Does your community have a shared culture, characteristics, or bond?
2. Is your community able to be mapped? Are there geographical boundaries?
3. Describe your community's relationship with the County of Imperial and how it is affected by policy decisions made by the Board of Supervisors.

The public can submit any testimony, but it is important to remember that your input can be best used if it addresses all three of these questions.

Communities of Interest

Drawing YOUR Communities of Interest

The County of Imperial is using DistrictR as a public mapping tool to allow residents to draw their own Communities of Interest and Districts.

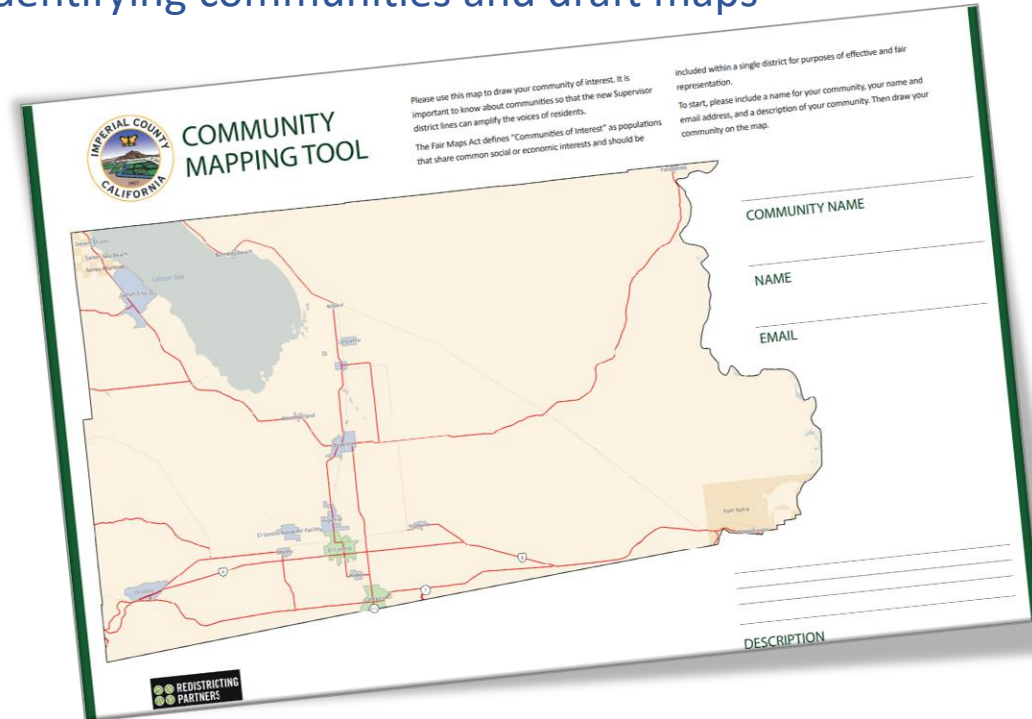


You draw the lines.

https://districtr.org/event/Imperial_County

Map Creation

Tools for identifying communities and draft maps



IMPERIAL COUNTY CALIFORNIA

COMMUNITY MAPPING TOOL

Please use this map to draw your community of interest. It is important to know about communities so that the new Supervisor district lines can amplify the voices of residents.

The Fair Maps Act defines "Communities of Interest" as populations that share common social or economic interests and should be included within a single district for purposes of effective and fair representation.


To start, please include a name for your community, your name and email address, and a description of your community. Then draw your community on the map.

COMMUNITY NAME _____

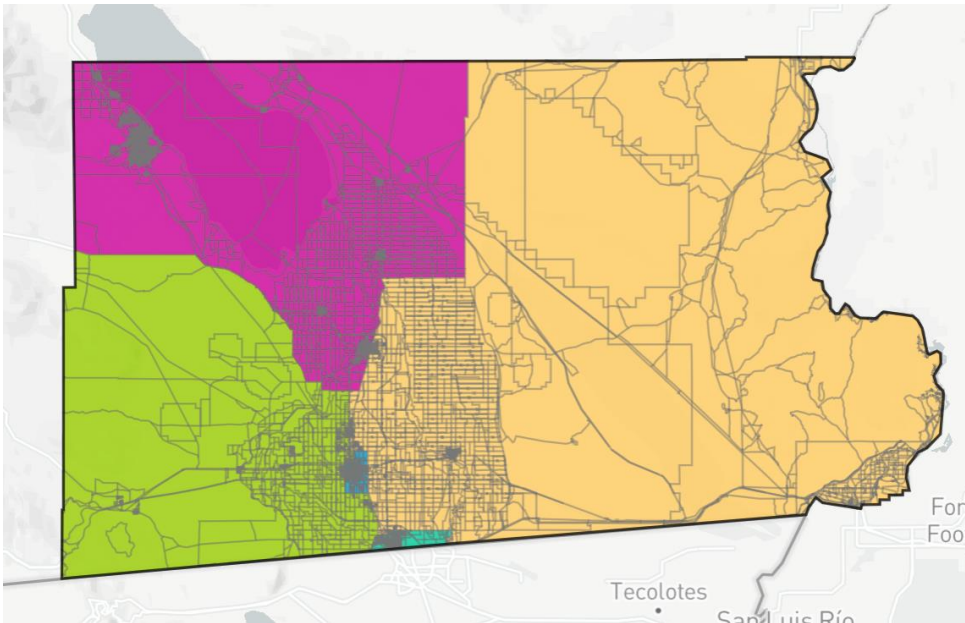
NAME _____

EMAIL _____

DESCRIPTION _____

 REDISTRICTING
PARTNERS

Map Submissions



The Best Plan Ever
ID: 49036

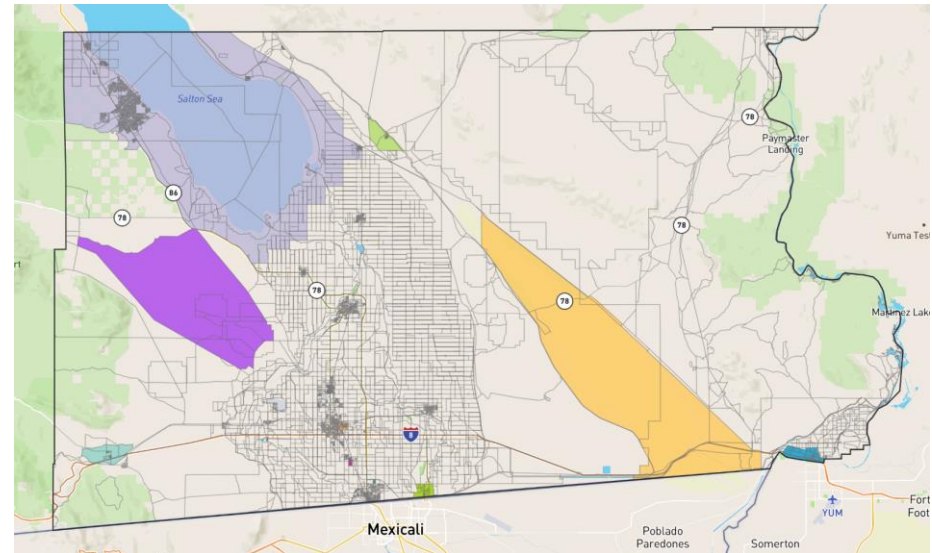
Blue: 36,184
Yellow: 34,689
Teal: 36,789
Green: 33,088
Pink: 32,871

Deviation: 5.94%

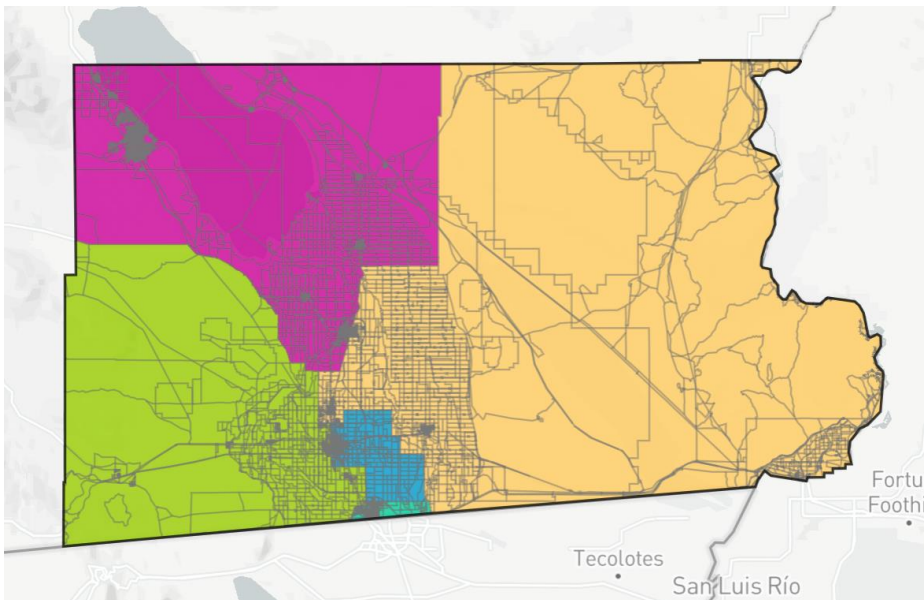
Map Submissions

RAC COIs
ID: 52168

Blue: Winterhaven Area	Area
Yellow: Glamis and Imperial Sand Dunes	Light Teal: Ocotillo
Teal: La Jolla Palms, Heartstone, and Sevilla States	Light Purple: Salton Sea Communities
“There is interest in keeping these developments together with its neighboring residential developments.”	Salmon: Downtown El Centro
Kermite Green: Gateway of the Americas	Light Blue: Downtown Calexico
Pink: “Original” Heber Area	Orange: El Centro (Area between 4th and Dogwood)
“The area was noted as containing a significant senior community.”	“The area encompasses everything between Dogwood and 4th Street, and Ross Ave, and Main St.”
Purple: Superstition Recreational	Light Green: Slab City



Map Submissions



Districts
ID: 52506

Blue: 35,426
Yellow: 35,863
Teal: 36,789
Green: 32,679
Pink: 32,871

Deviation: 5.94%

Map Submissions

True Representation

ID: 52590

Blue: 36,634

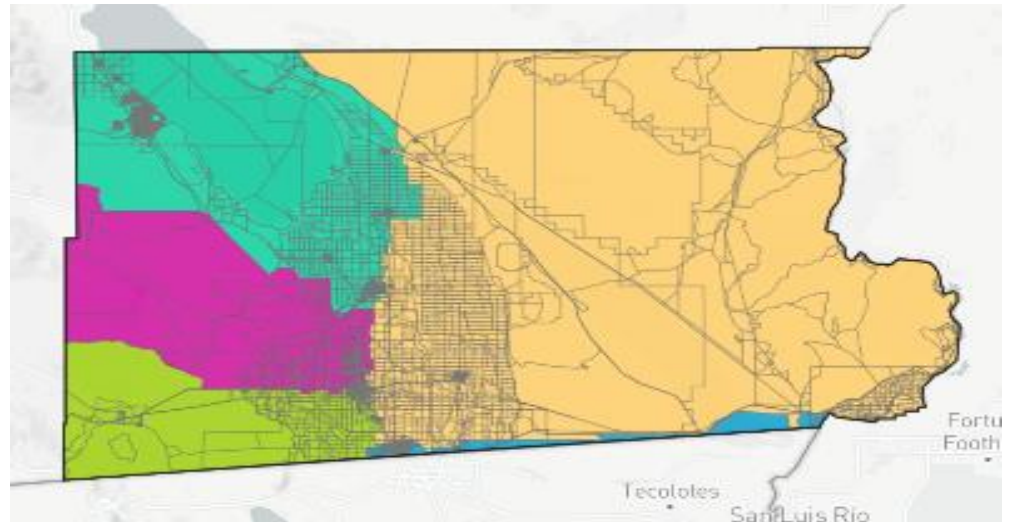
Yellow: 27,352

Teal: 38,439

Green: 39,273

Pink: 31,930

Deviation: 21.23%



Map Submissions

Redistricting Advisory Commission COIs

ID: 55196

Blue: Winterhaven Area

Yellow: Glamis and Imperial Sand Dunes

Teal: La Jolla Palms, Heartstone, and
Sevilla States

“There is interest in keeping these
developments together with its
neighboring residential developments.”

Kermi Green: Gateway of the Americas

Pink: “Original” Heber Area

“The area was noted as containing a
significant senior community.”

Purple: Superstition Recreational Area

Light Teal: Ocotillo

Light Purple: Salton Sea Communities

Salmon: Downtown El Centro

Light Blue: Downtown Calexico

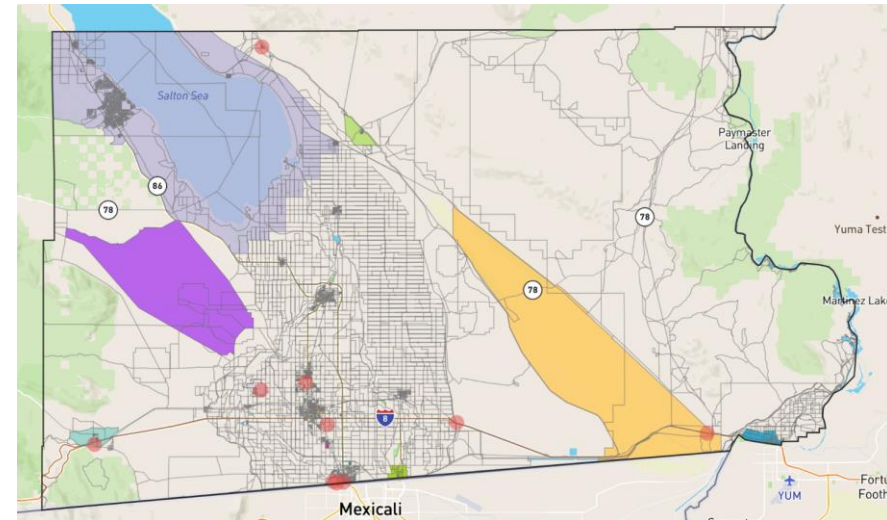
Orange: El Centro (Area between 4th
and Dogwood)

“The area encompasses everything
between Dogwood and 4th Street, and
Ross Ave, and Main St.”

Light Green: Slab City

Important Places:

Felicity, Imperial Airport, Naval Air Base
El Centro, Calexico International Airport,
Calexico Outlets, Imperial Valley Mall,
Ocotillo Desert Museum, Border Park
(Gathering location for the homeless),
Holtville Hotsprings, Fountain of Youth



Map Submissions

Example1

ID: 55241

Blue: 35,592

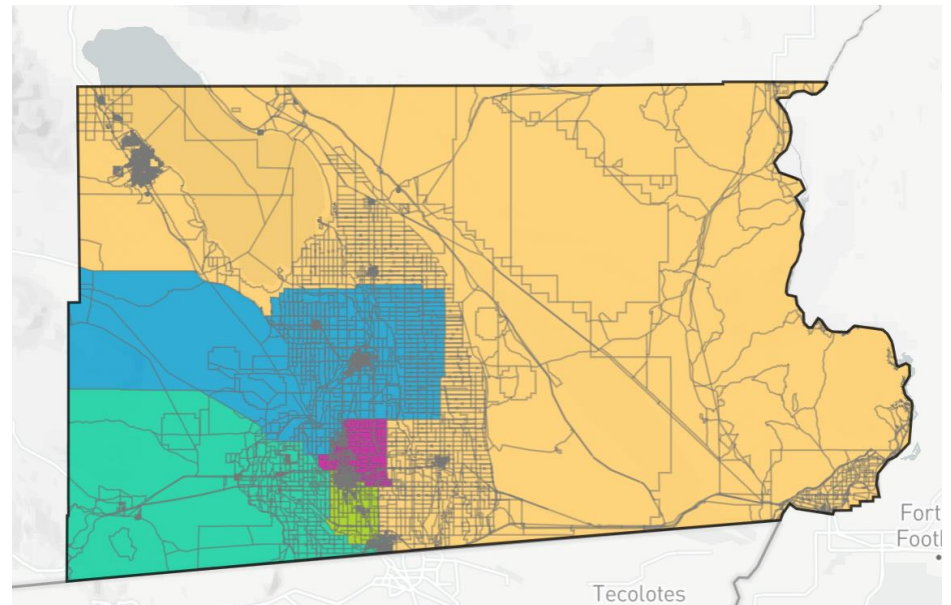
Yellow: 33,636

Teal: 33,232

Green: 35,308

Pink: 35,839

Deviation: 4.3%



Map Submissions

Example2

ID: 55336

Blue: 35,401

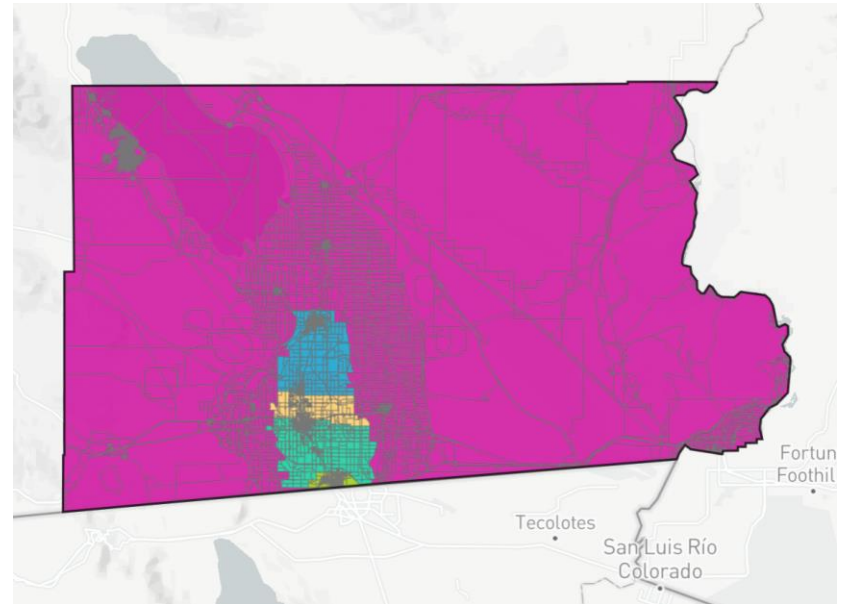
Yellow: 35,409

Teal: 35,383

Green: 37,620

Pink: 29,439

Deviation: 15.22%



Map Submissions

This 1

ID: 55407

Blue: 33,326

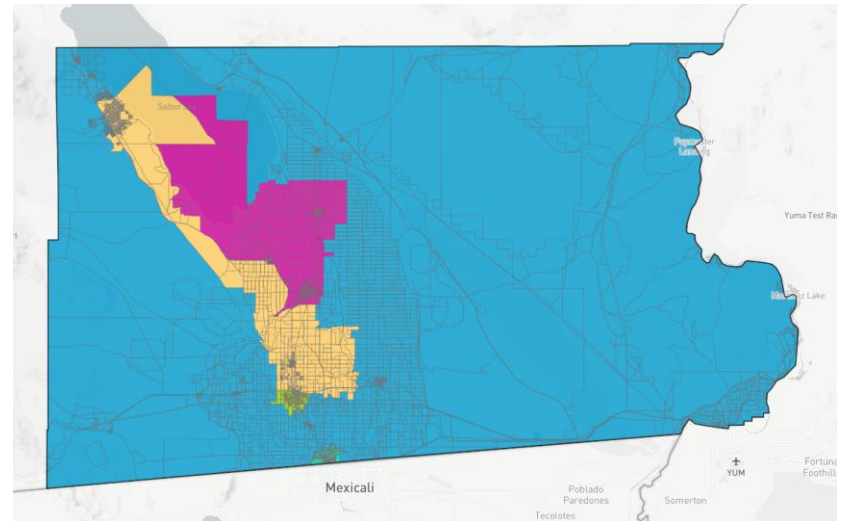
Yellow: 35,481

Teal: 36,319

Green: 36,150

Pink: 32,346

Deviation: 6.85%



Current Districts

Review of current seats with new census data

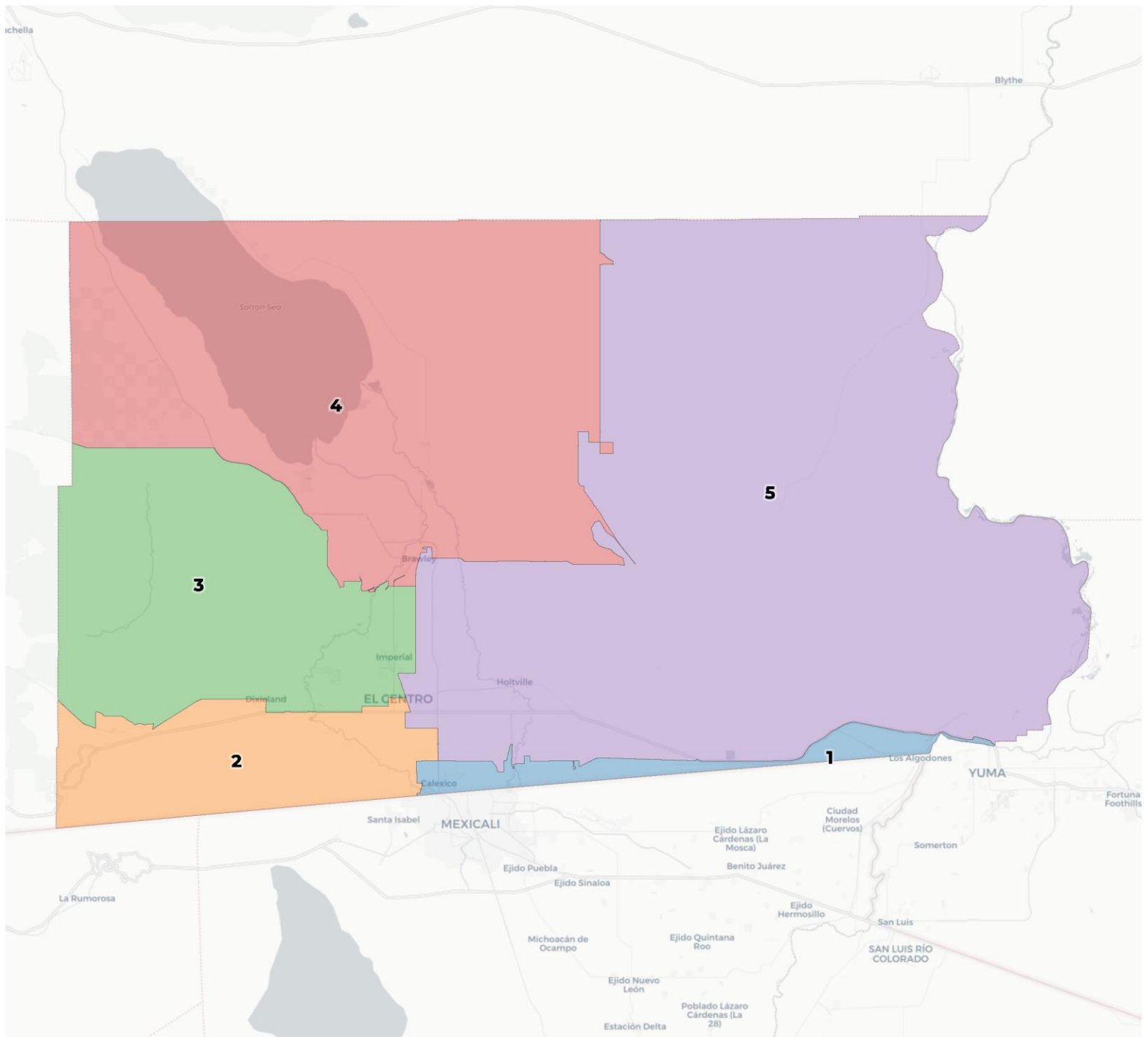
Packet includes three ways to view current districts

- **Overview Page**
- Data Tables
- Individual district pages with data



REDISTRICTING PARTNERS		Imperial County				
2020 Census		1	2	3	4	5
Population		39,431	30,416	39,095	33,987	31,297
Deviation		4,706	-4,309	4,370	-1,338	-3,428
Deviation %		-13.6%	12.4%	12.4%	-3.9%	-9.9%
Other		793	1,025	1,434	1,773	4,508
Other %		2.0%	3.3%	3.2%	5.2%	15.7%
Latino		37,886	87.5%	82.3%	26,842	25,762
Latino %		96.7%	290	677	80.4%	82.4%
Latino %		670	0.9%	1.7%	313	269
Asian		1.7%	403	589	1.4%	1.0%
Asian %		84	1.3%	1.5%		
Black		0.2%				
Black %						
Citizen Voting Age Population (CVAP)		1	2	3	4	5
Total CVAP		20,770	18,507	25,036	21,346	17,472
Other CVAP		500	2,897	5,218	6,484	13,306
Other CVAP %		2.4%	16.1%	20.8%	30.4%	75.9%
Latino CVAP		20,122	14,325	18,987	13,043	11,584
Latino CVAP %		96.9%	80.7%	72.3%	61.7%	77.7%
Latino CVAP %		60	291	562	225	94
Asian CVAP		0.3%	1.6%	2.2%	1.7%	0.5%
Asian CVAP		88	303	1,389	1,592	488
Black CVAP		0.4%	1.7%	4.7%	7.5%	2.8%
Black CVAP %						





2020 Census

	1	2	3	4	5
Population	39,759	30,415	39,097	33,388	30,967
Deviation	5,034	-4,310	4,372	-1,337	-3,758
Deviation %	14.5%	-12.4%	12.6%	-3.9%	-10.8%
Other	961	3,125	5,434	5,772	4,758
Other %	2.4%	10.3%	13.9%	17.3%	15.4%
Latino	38,040	26,617	32,397	26,843	25,626
Latino %	95.7%	87.5%	82.9%	80.4%	82.8%
Asian	673	270	677	313	257
Asian %	1.7%	0.9%	1.7%	0.9%	0.8%
Black	85	403	589	460	326
Black %	0.2%	1.3%	1.5%	1.4%	1.1%

Citizen Voting Age Population (CVAP)

	1	2	3	4	5
Total CVAP	20,937	18,004	25,040	21,347	17,298
Other CVAP	605	2,893	5,220	6,484	3,197
Other CVAP %	2.9%	16.1%	20.8%	30.4%	18.5%
Latino CVAP	20,182	14,526	18,099	13,046	13,520
Latino CVAP %	96.4%	80.7%	72.3%	61.1%	78.2%
Asian CVAP	60	281	552	225	94
Asian CVAP %	0.3%	1.6%	2.2%	1.1%	0.5%
Black CVAP	90	303	1,169	1,592	486
Black CVAP %	0.4%	1.7%	4.7%	7.5%	2.8%

2020 Census

	1	2	3	4	5
Population	39,759	30,415	39,097	33,388	30,967
Deviation	5,034	-4,310	4,372	-1,337	-3,758
Deviation %	14.5%	-12.4%	12.6%	-3.9%	-10.8%
Other	961	3,125	5,434	5,772	4,758
Other %	2.4%	10.3%	13.9%	17.3%	15.4%
Latino	38,040	26,617	32,397	26,843	25,626
Latino %	95.7%	87.5%	82.9%	80.4%	82.8%
Asian	673	270	677	313	257
Asian %	1.7%	0.9%	1.7%	0.9%	0.8%
Black	85	403	589	460	326
Black %	0.2%	1.3%	1.5%	1.4%	1.1%

Citizen Voting Age Population (CVAP)

	1	2	3	4	5
Total CVAP	20,937	18,004	25,040	21,347	17,298
Other CVAP	605	2,893	5,220	6,484	3,197
Other CVAP %	2.9%	16.1%	20.8%	30.4%	18.5%
Latino CVAP	20,182	14,526	18,099	13,046	13,520
Latino CVAP %	96.4%	80.7%	72.3%	61.1%	78.2%
Asian CVAP	60	281	552	225	94
Asian CVAP %	0.3%	1.6%	2.2%	1.1%	0.5%
Black CVAP	90	303	1,169	1,592	486
Black CVAP %	0.4%	1.7%	4.7%	7.5%	2.8%

2020 Census

	1	2	3	4	5
Population	39,759	30,415	39,097	33,388	30,967
Deviation	5,034	-4,310	4,372	-1,337	-3,758
Deviation %	14.5%	-12.4%	12.6%	-3.9%	-10.8%
Other	961	3,125	5,434	5,772	4,758
Other %	2.4%	10.3%	13.9%	17.3%	15.4%
Latino	38,040	26,617	32,397	26,843	25,626
Latino %	95.7%	87.5%	82.8%	80.4%	82.8%
Asian	1,111	313	313	313	257
Asian %	2.8%	1.0%	0.8%	0.9%	0.8%
Black	460	460	460	460	326
Black %	1.1%	1.5%	1.2%	1.4%	1.1%

The total deviation of the plan is the sum of the absolute values of the highest and lowest districts. *Here the plan deviation is **26.9%***

Citizen Voting Age Population (CVAP)

	1	2	3	4	5
Total CVAP	20,937	18,004	25,040	21,347	17,298
Other CVAP	605	2,893	5,220	6,484	3,197
Other CVAP %	2.9%	16.1%	20.8%	30.4%	18.5%
Latino CVAP	20,182	14,526	18,099	13,046	13,520
Latino CVAP %	96.4%	80.7%	72.3%	61.1%	78.2%
Asian CVAP	60	281	552	225	94
Asian CVAP %	0.3%	1.6%	2.2%	1.1%	0.5%
Black CVAP	90	303	1,169	1,592	486
Black CVAP %	0.4%	1.7%	4.7%	7.5%	2.8%

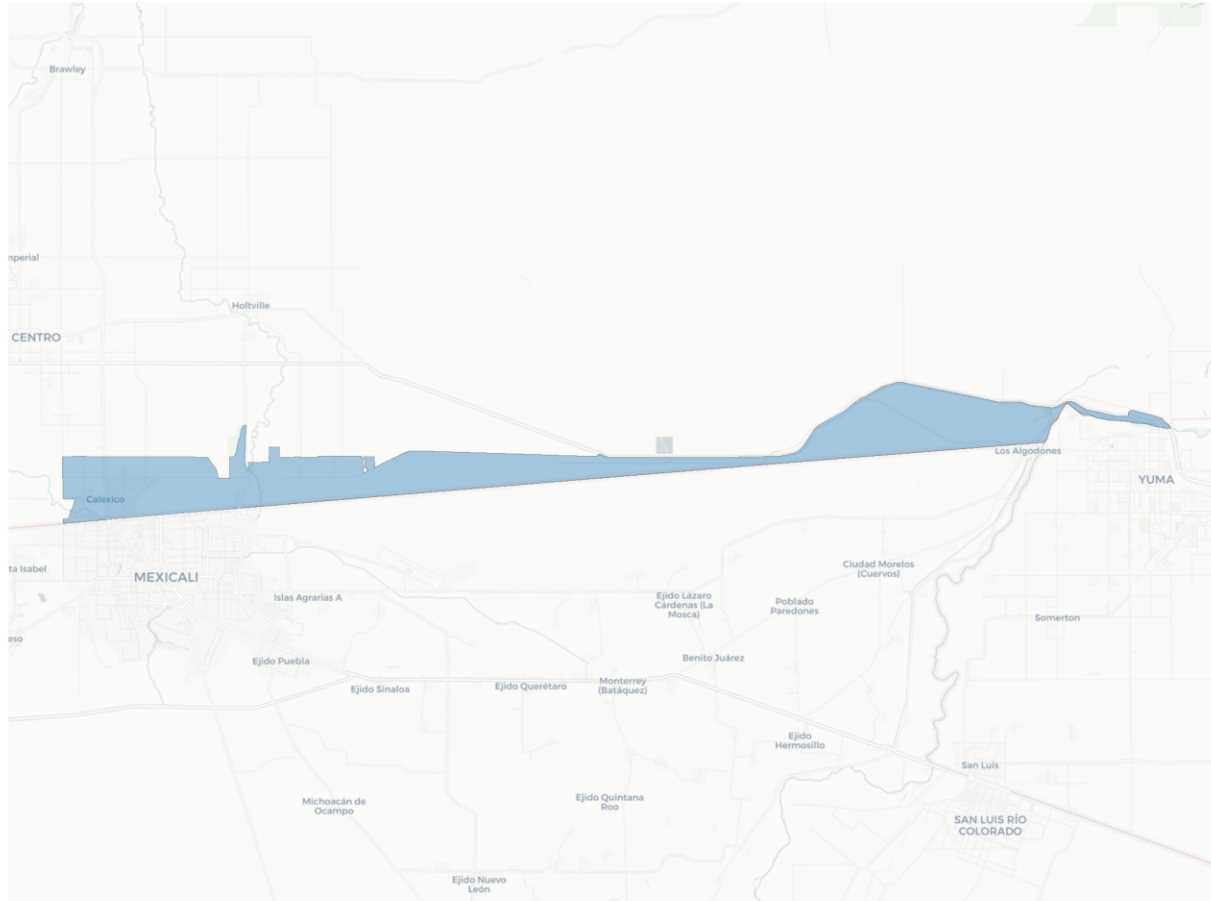
2020 Census

	1	2	3	4	5
Population	39,759	30,415	39,097	33,388	30,967
Deviation	5,034	-4,310	4,372	-1,337	-3,758
Deviation %	14.5%	-12.4%	12.6%	-3.9%	-10.8%
Other	961	3,125	5,434	5,772	4,758
Other %	2.4%	10.3%	13.9%	17.3%	15.4%
Latino	38,040	26,617	32,397	26,843	25,626
Latino %	95.7%	87.5%	82.9%	80.4%	82.8%
Asian	673	270	677	313	257
Asian %	1.7%	0.9%	1.7%	0.9%	0.8%
Black	85	403	589	460	326
Black %	0.2%	1.3%	1.5%	1.4%	1.1%

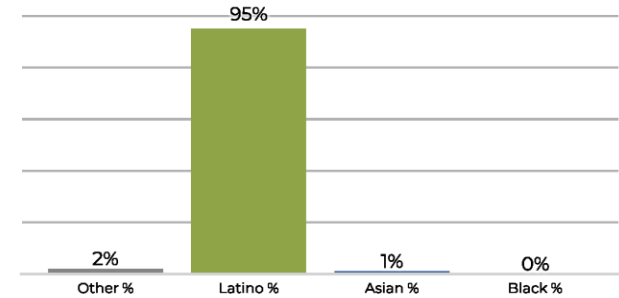
Citizen Voting Age Population (CVAP)

	1	2	3	4	5
Total CVAP	20,937	18,004	25,040	21,347	17,298
Other CVAP	605	2,893	5,220	6,484	3,197
Other CVAP %	2.9%	16.1%	20.8%	30.4%	18.5%
Latino CVAP	20,182	14,526	18,099	13,046	13,520
Latino CVAP %	96.4%	80.7%	72.3%	61.1%	78.2%
Asian CVAP	60	281	552	225	94
Asian CVAP %	0.3%	1.6%	2.2%	1.1%	0.5%
Black CVAP	90	303	1,169	1,592	486
Black CVAP %	0.4%	1.7%	4.7%	7.5%	2.8%

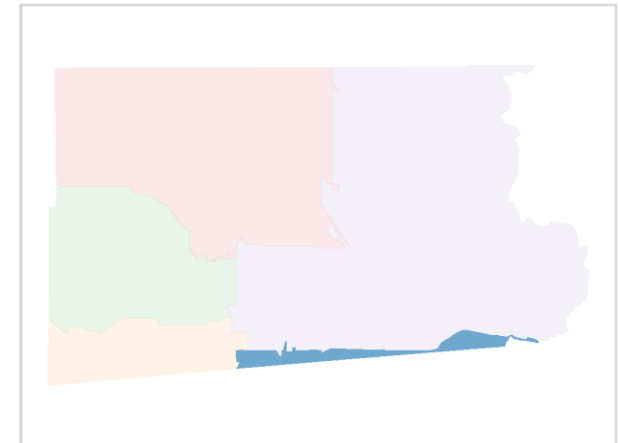
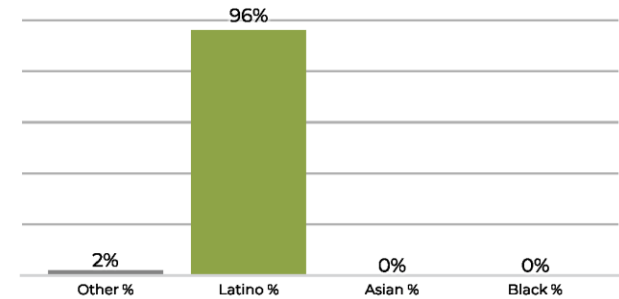
District 1



2020 Census

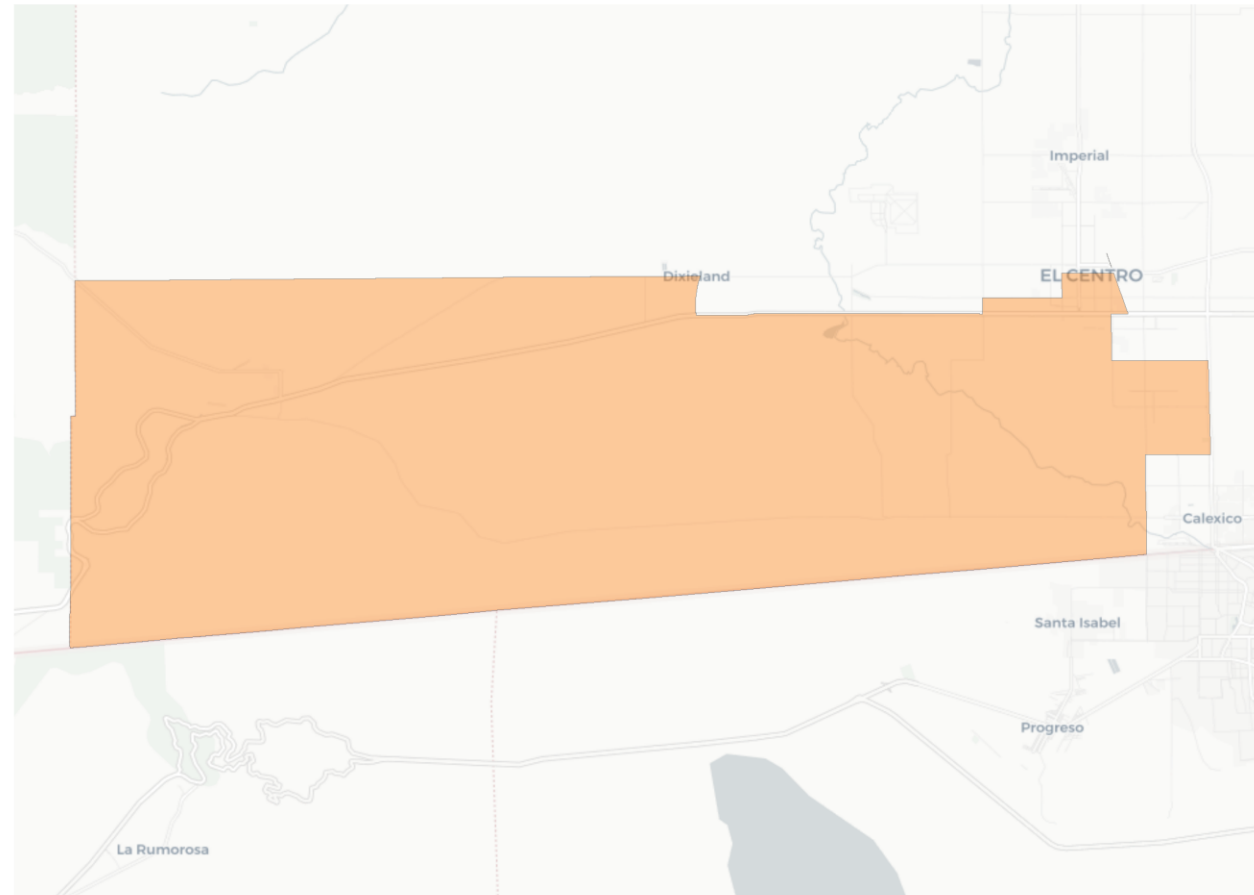


Citizen Voting Age Population

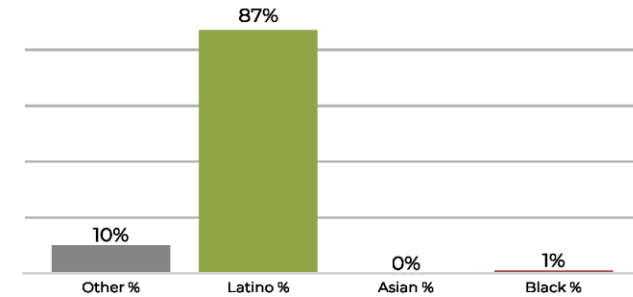


Population	Deviation	Deviation %	Other	Other %	Latino	Latino %	Asian	Asian %	Black	Black %
39,759	5,034	14.5%	961	2.4%	38,040	95.7%	673	1.7%	85	0.2%
Total CVAP	Other CVAP	Other CVAP %	Latino CVAP	Latino CVAP %	Asian CVAP	Asian CVAP %	Black CVAP	Black CVAP %		
20,937	605	2.9%	20,182	96.4%	60	0.3%	90	0.4%		

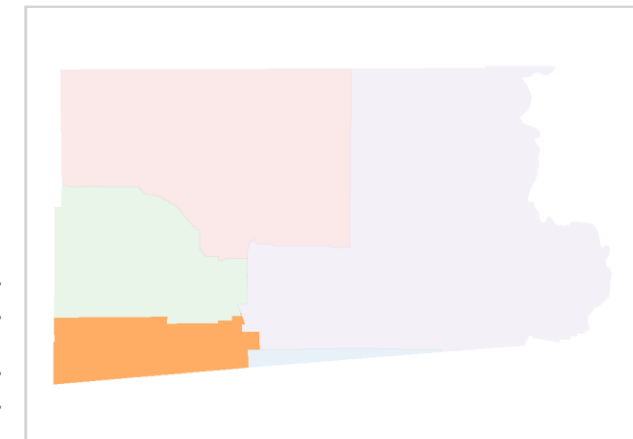
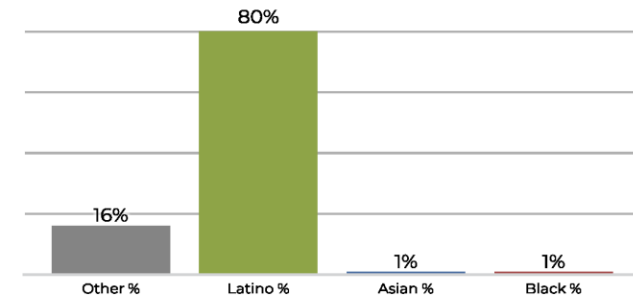
District 2



2020 Census

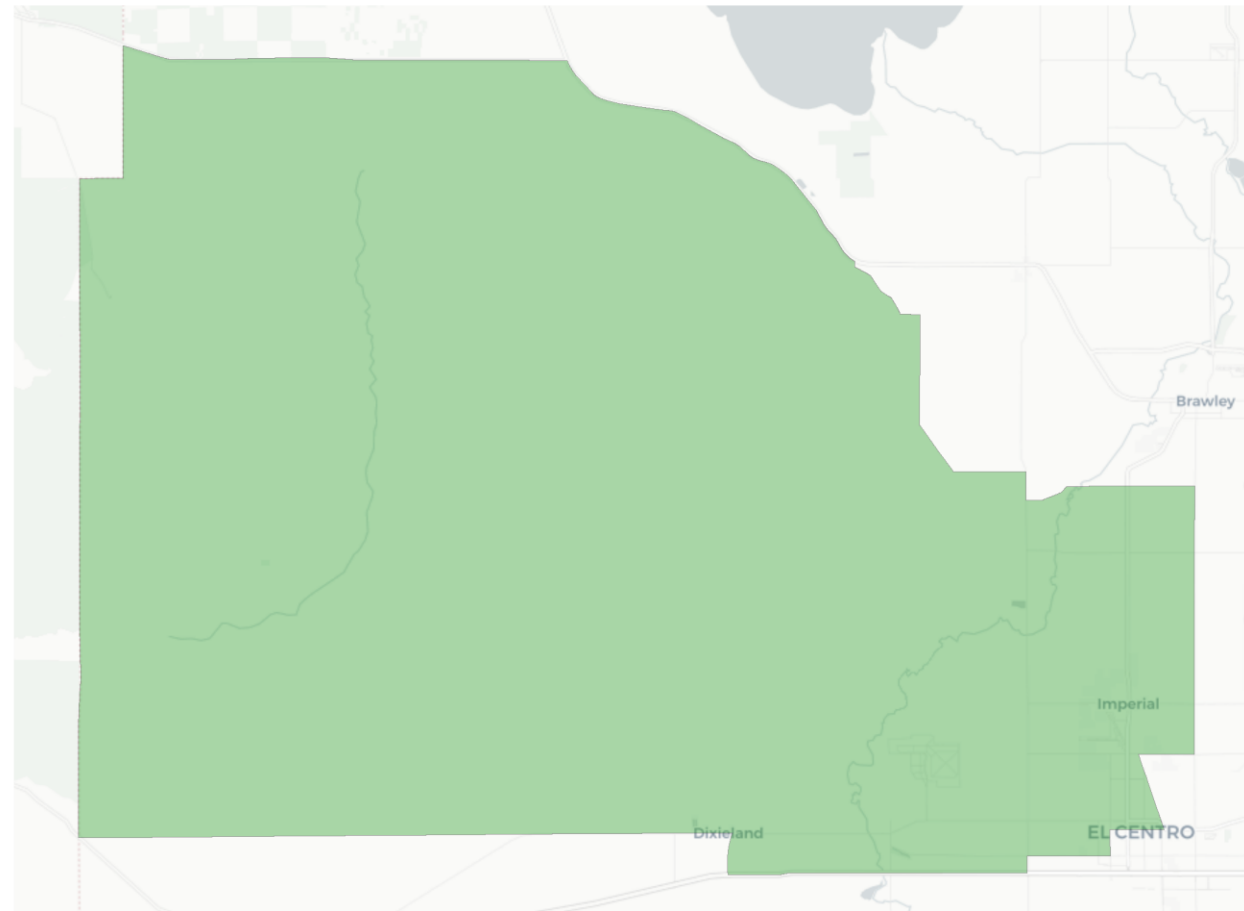


Citizen Voting Age Population

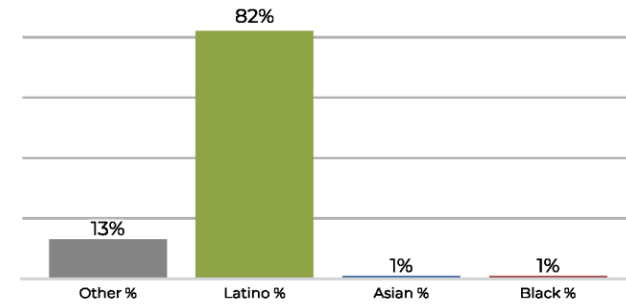


Population	Deviation	Deviation %	Other	Other %	Latino	Latino %	Asian	Asian %	Black	Black %
30,416	-4,309	-12.4%	3,125	10.3%	26,618	87.5%	270	0.9%	403	1.3%
Total CVAP	Other CVAP	Other CVAP %	Latino CVAP	Latino CVAP %	Asian CVAP	Asian CVAP %	Black CVAP	Black CVAP %		
18,001	2,891	16.1%	14,525	80.7%	281	1.6%	303	1.7%		

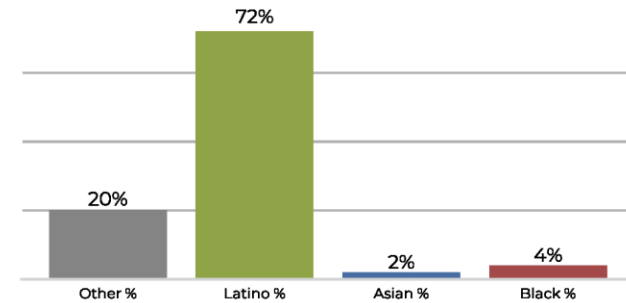
District 3



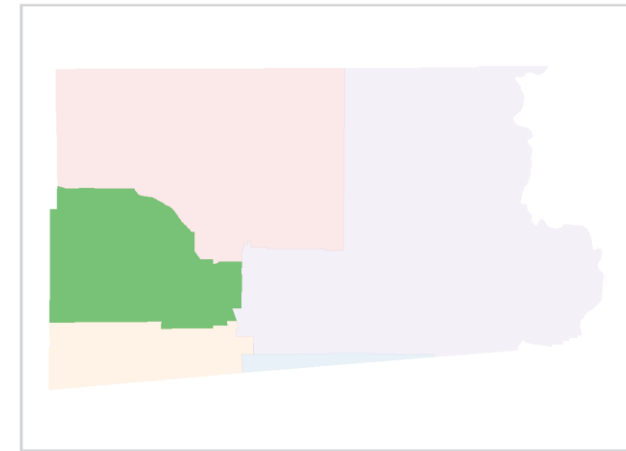
2020 Census



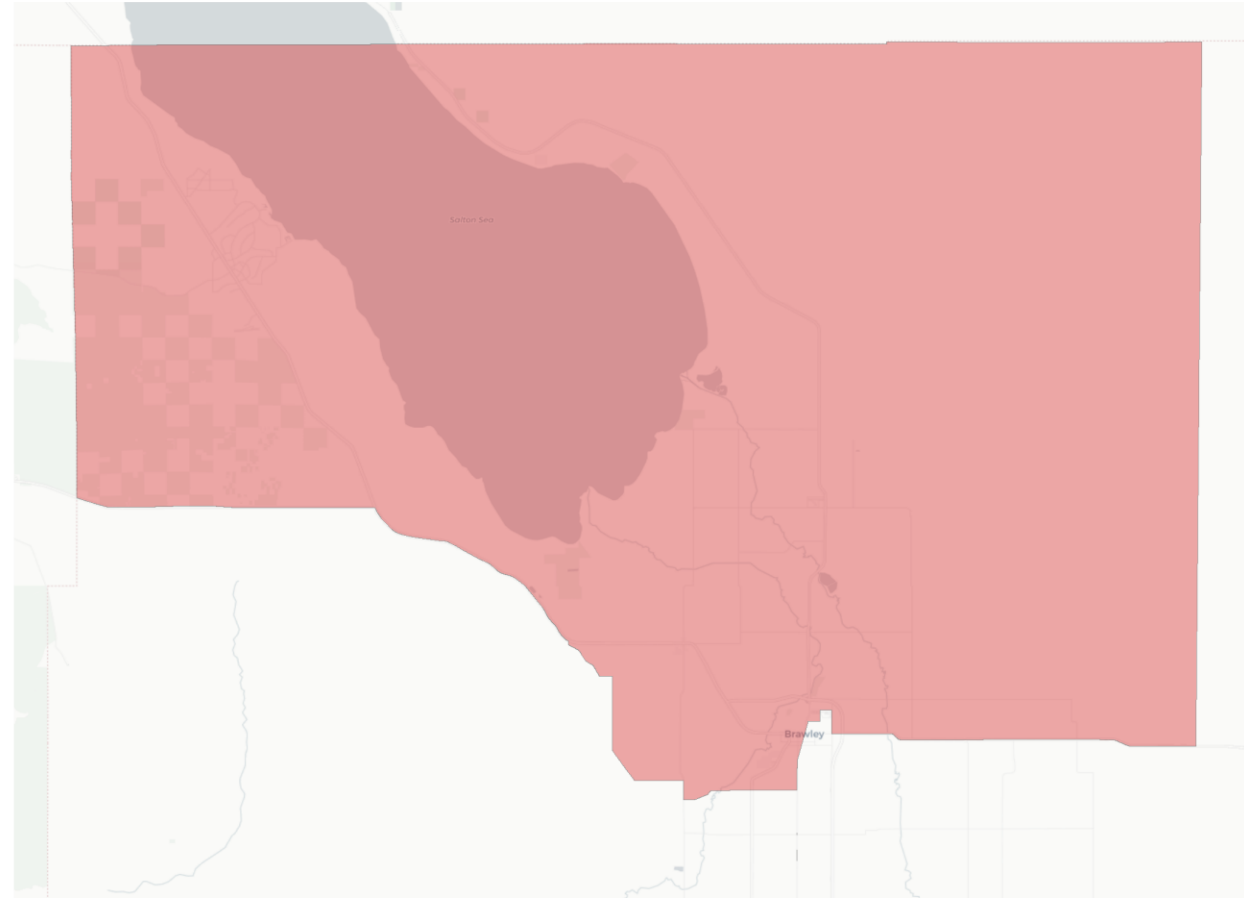
Citizen Voting Age Population



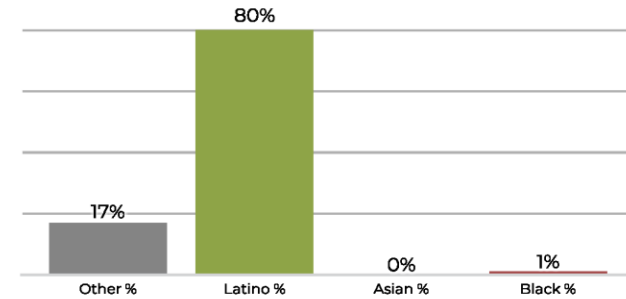
Population	Deviation	Deviation %	Other	Other %	Latino	Latino %	Asian	Asian %	Black	Black %
39,095	4,370	12.6%	5,434	13.9%	32,395	82.9%	677	1.7%	589	1.5%
Total CVAP	Other CVAP	Other CVAP %	Latino CVAP	Latino CVAP %	Asian CVAP	Asian CVAP %	Black CVAP	Black CVAP %		
25,036	5,218	20.8%	18,097	72.3%	552	2.2%	1,169	4.7%		



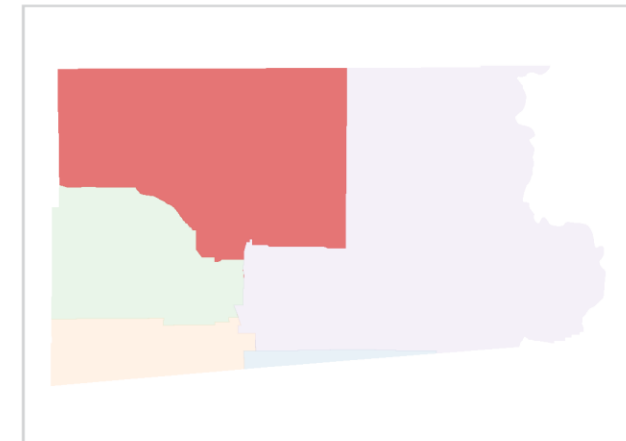
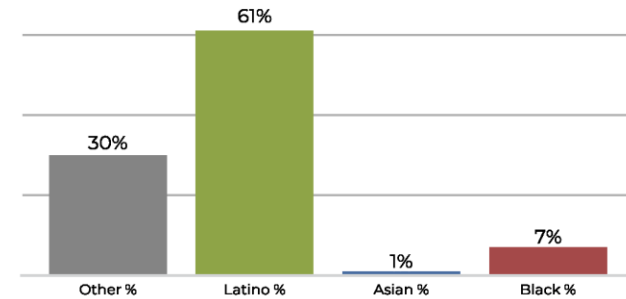
District 4



2020 Census



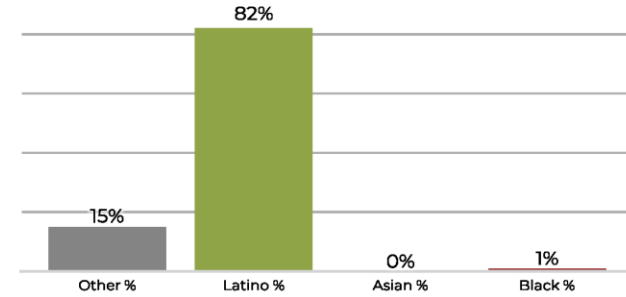
Citizen Voting Age Population



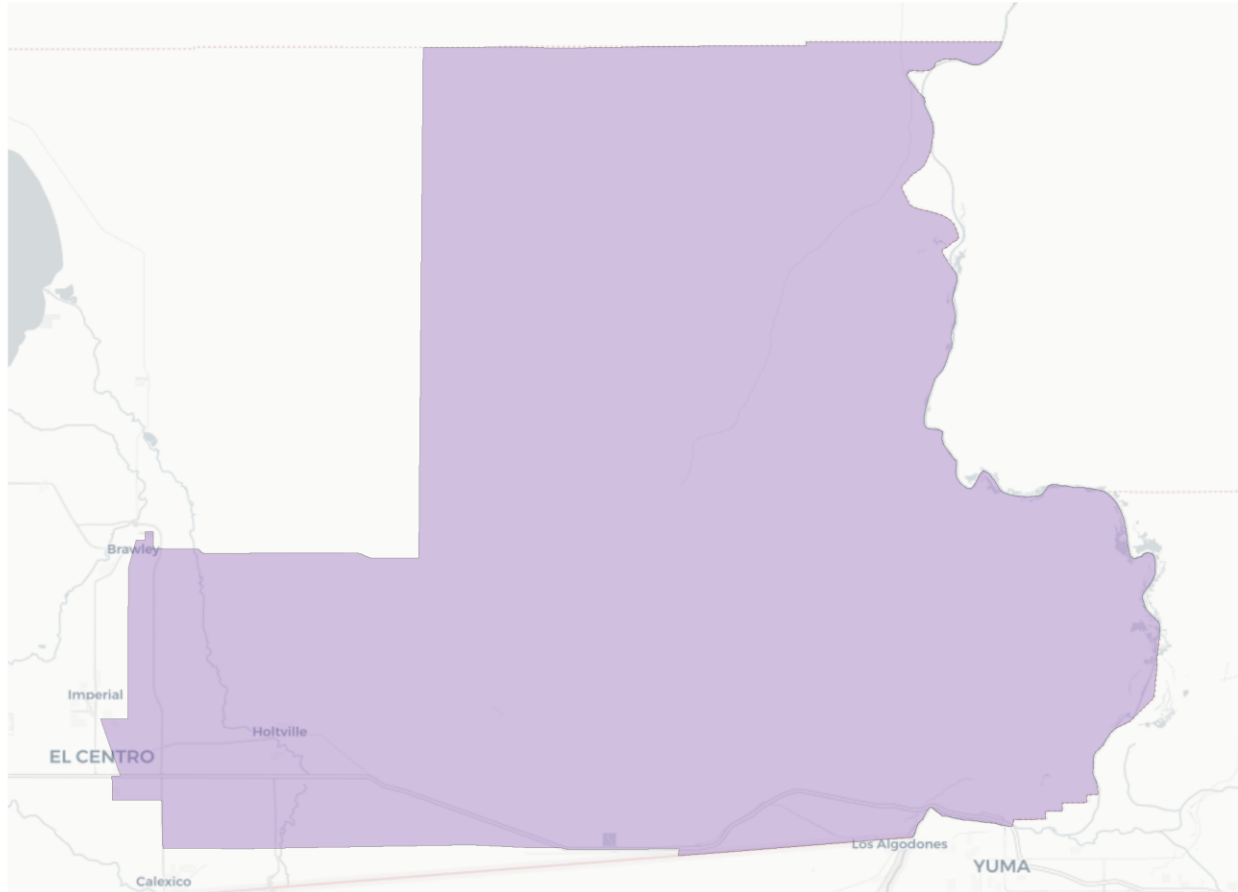
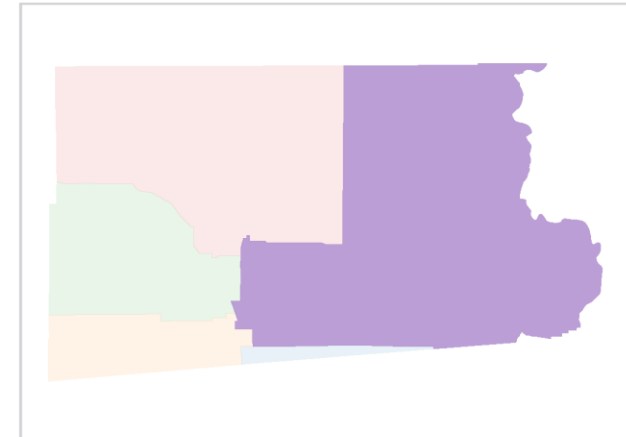
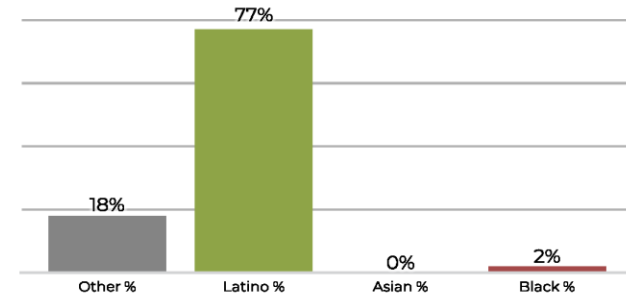
Population	Deviation	Deviation %	Other	Other %	Latino	Latino %	Asian	Asian %	Black	Black %
33,387	-1,338	-3.9%	5,772	17.3%	26,842	80.4%	313	0.9%	460	1.4%
Total CVAP	Other CVAP	Other CVAP %	Latino CVAP	Latino CVAP %	Asian CVAP	Asian CVAP %	Black CVAP	Black CVAP %		
21,346	6,484	30.4%	13,045	61.1%	225	1.1%	1,592	7.5%		

District 5

2020 Census



Citizen Voting Age Population



Population	Deviation	Deviation %	Other	Other %	Latino	Latino %	Asian	Asian %	Black	Black %
31,297	-3,428	-9.9%	4,928	15.7%	25,782	82.4%	260	0.8%	327	1.0%
Total CVAP	Other CVAP	Other CVAP %	Latino CVAP	Latino CVAP %	Asian CVAP	Asian CVAP %	Black CVAP	Black CVAP %		
17,472	3,306	18.9%	13,584	77.7%	94	0.5%	488	2.8%		

From COI to Draft Maps

Getting from input to new proposed maps

Redistricting Partners needs feedback from the board on potential draft plan versions.

- All plans will follow the required criteria, VRA, Compactness, Contiguity, equal population, etc.
- Need feedback from the Board of Supervisors and community on potential versions.

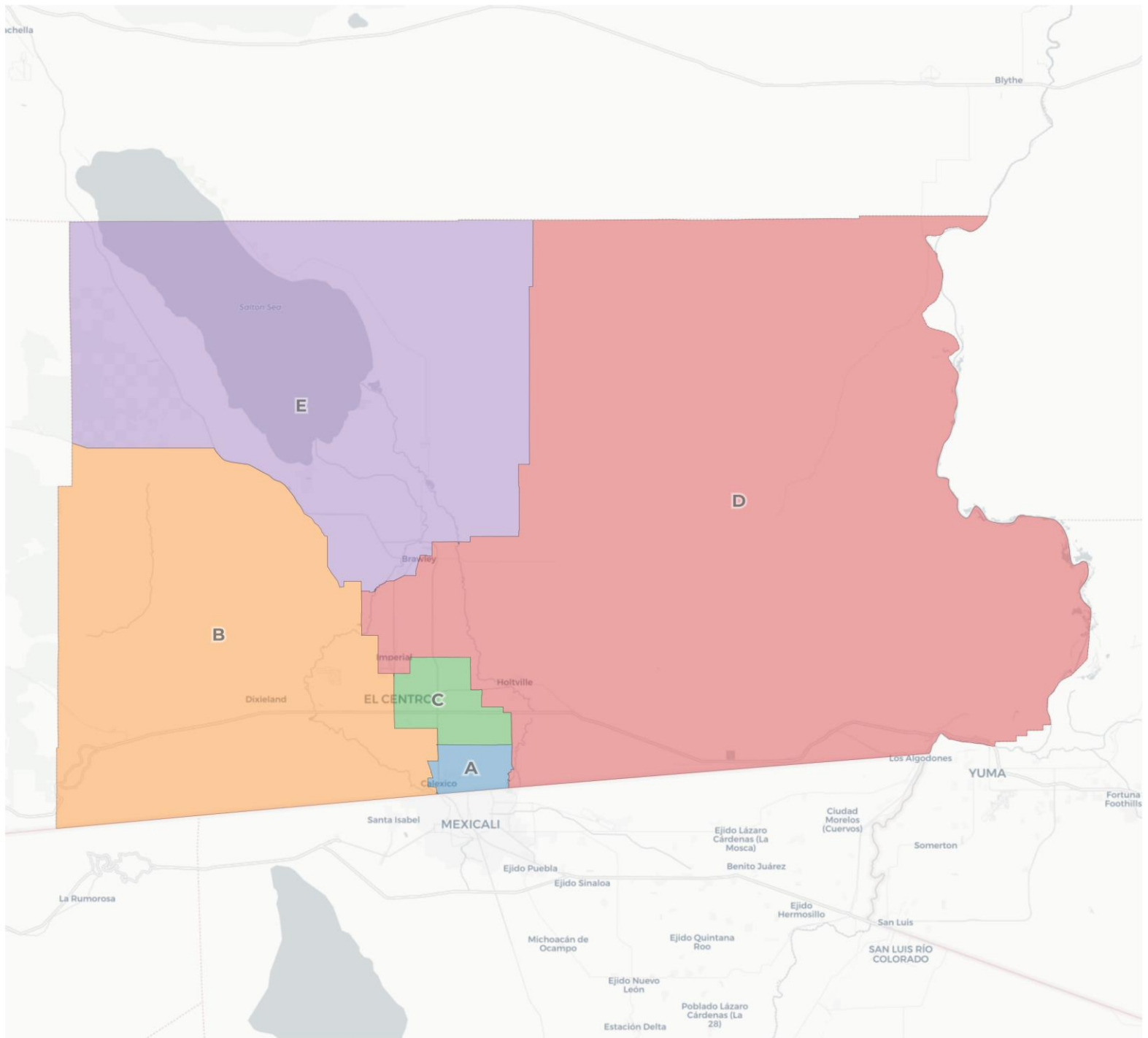
From COI to Draft Maps

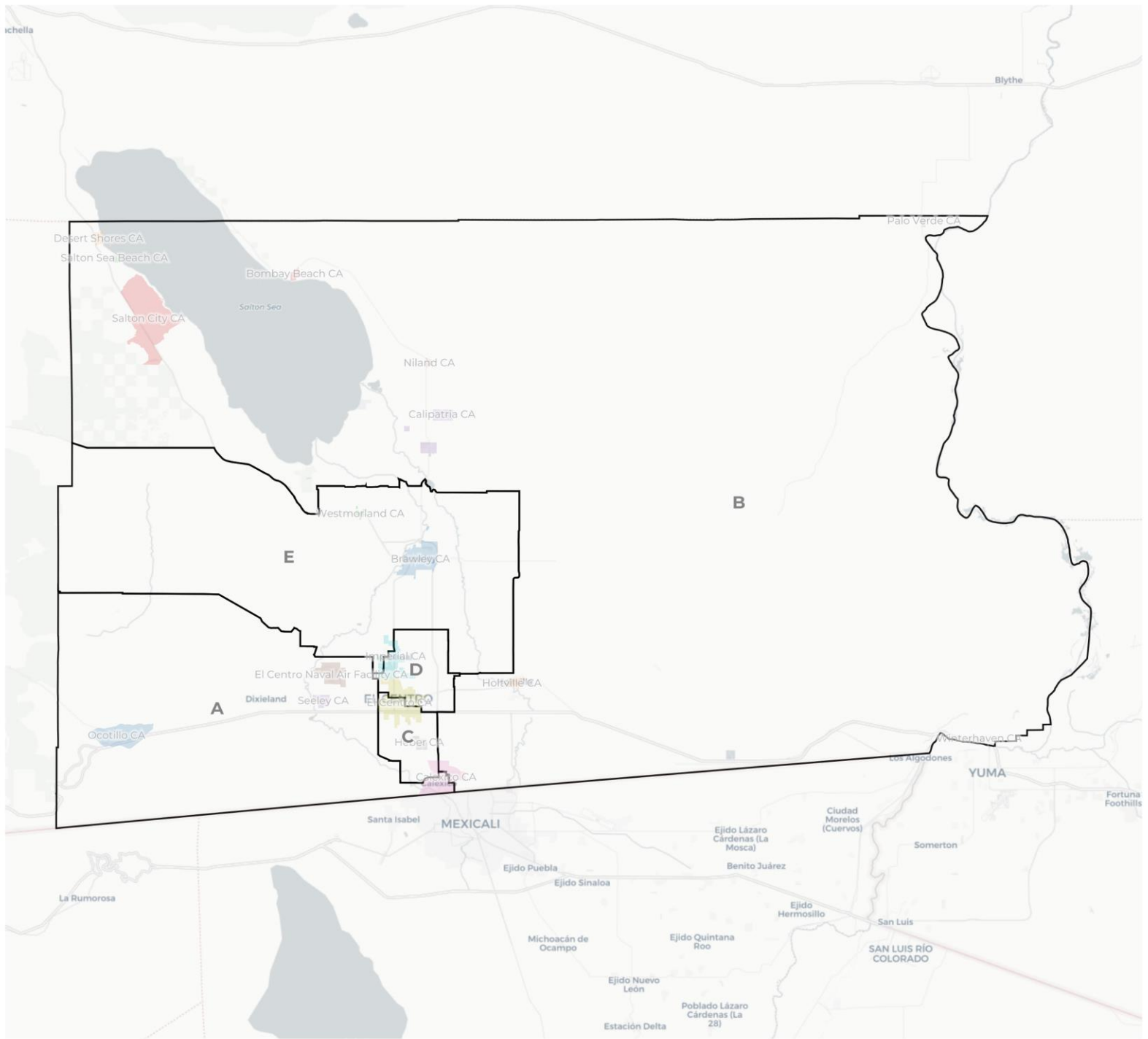
Getting from input to new proposed maps

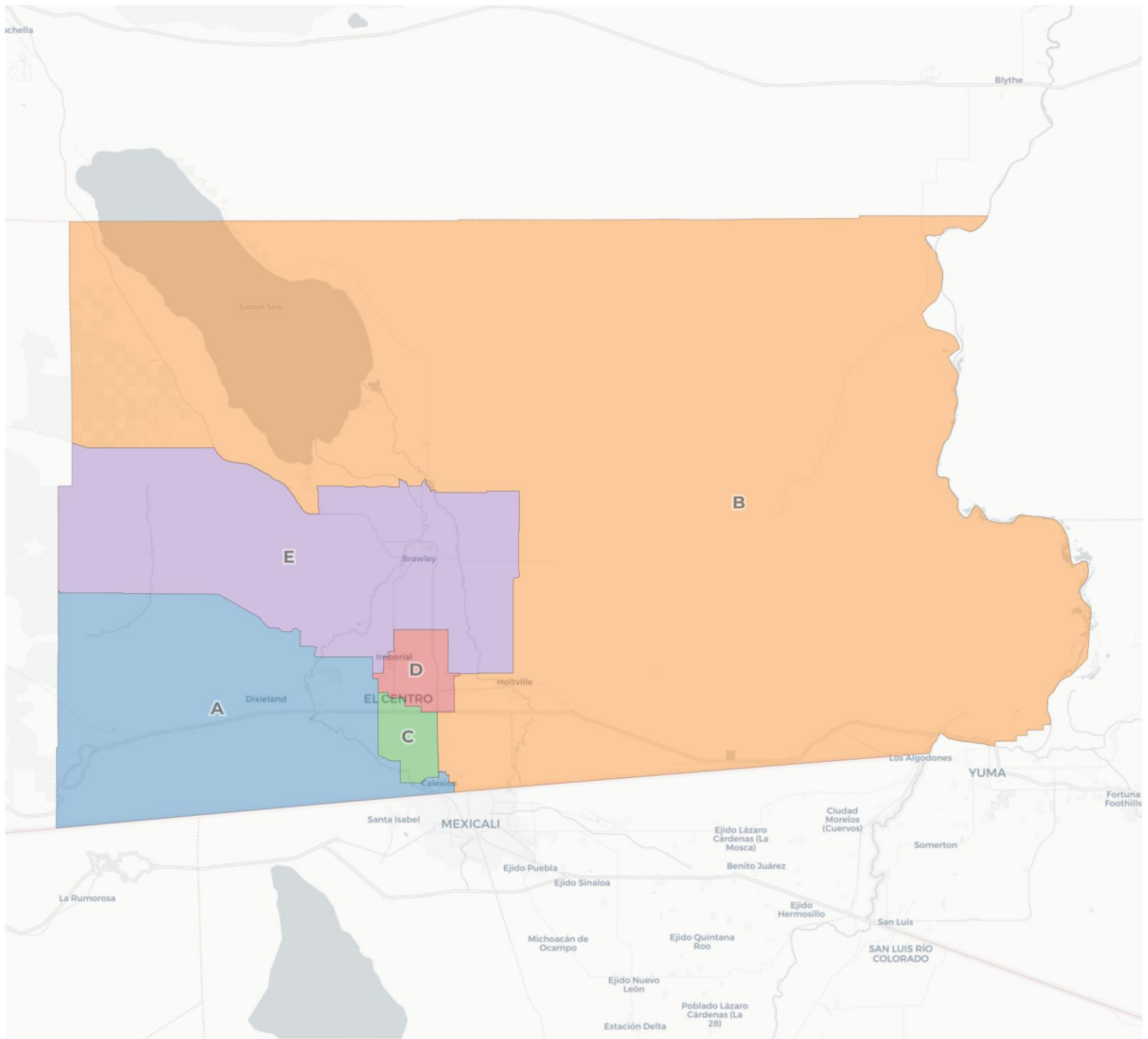
All public plans and Redistricting Partners Draft Maps will include.

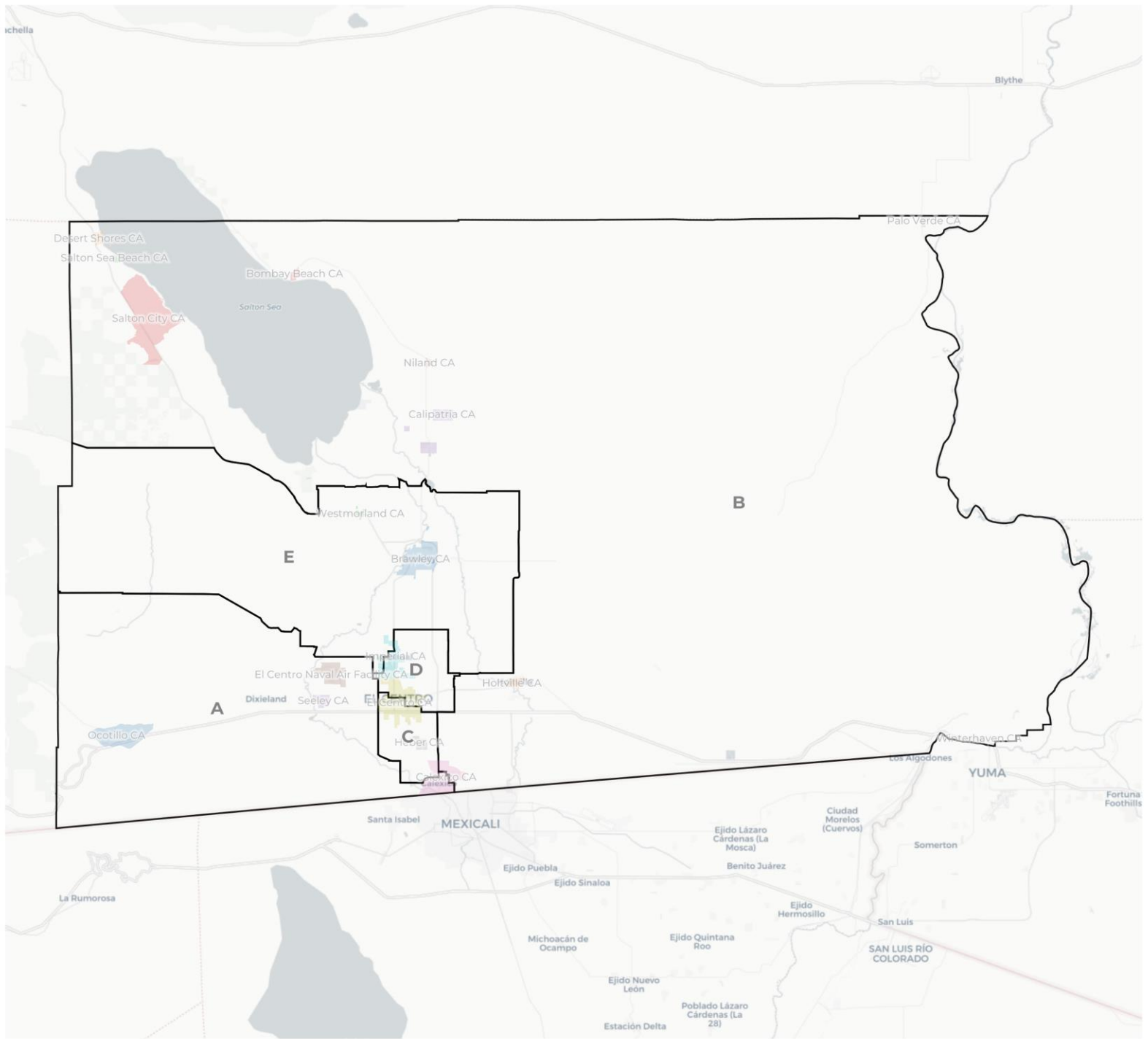
- Overview Page
- Data Tables
- Individual district pages with data

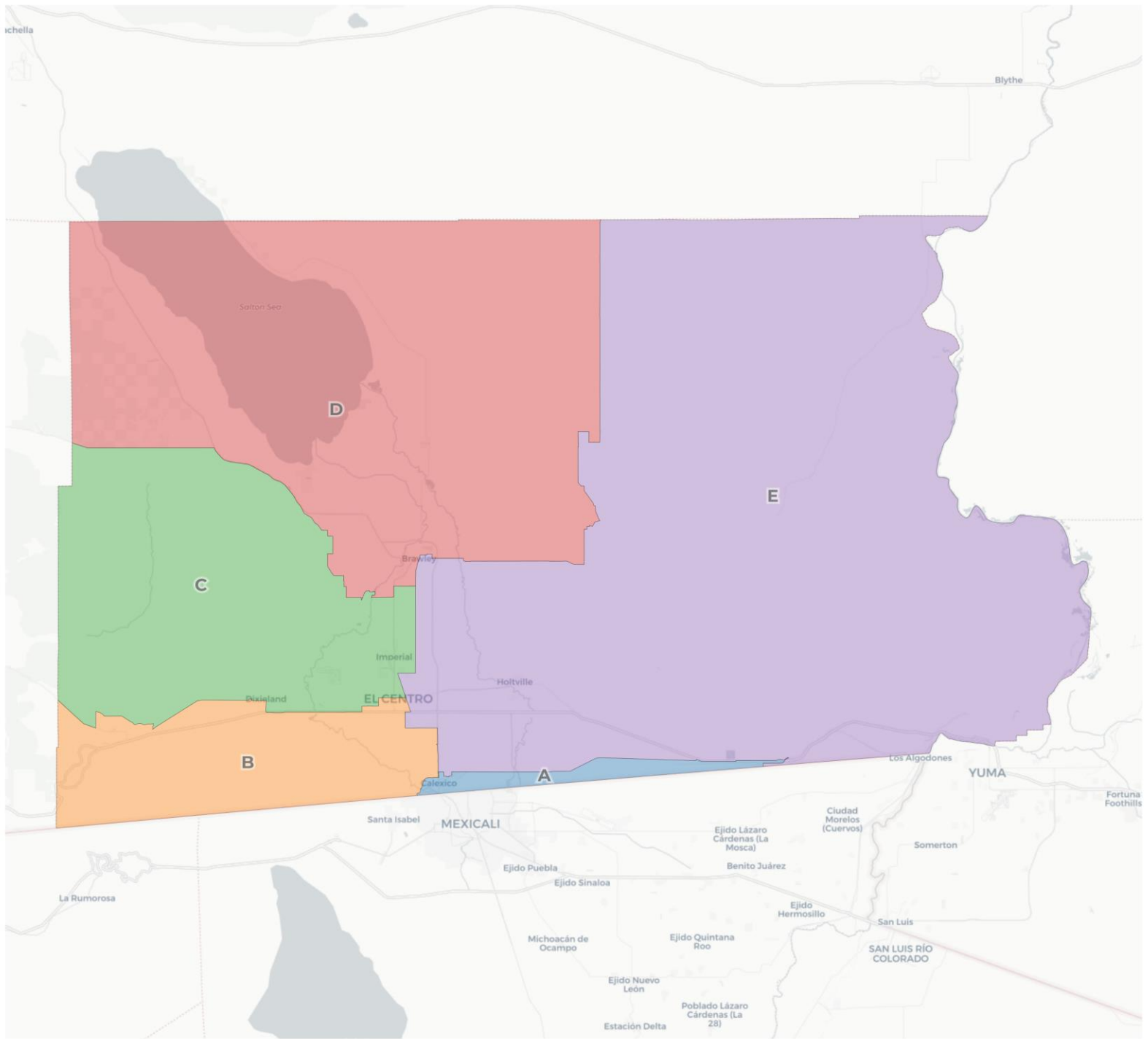






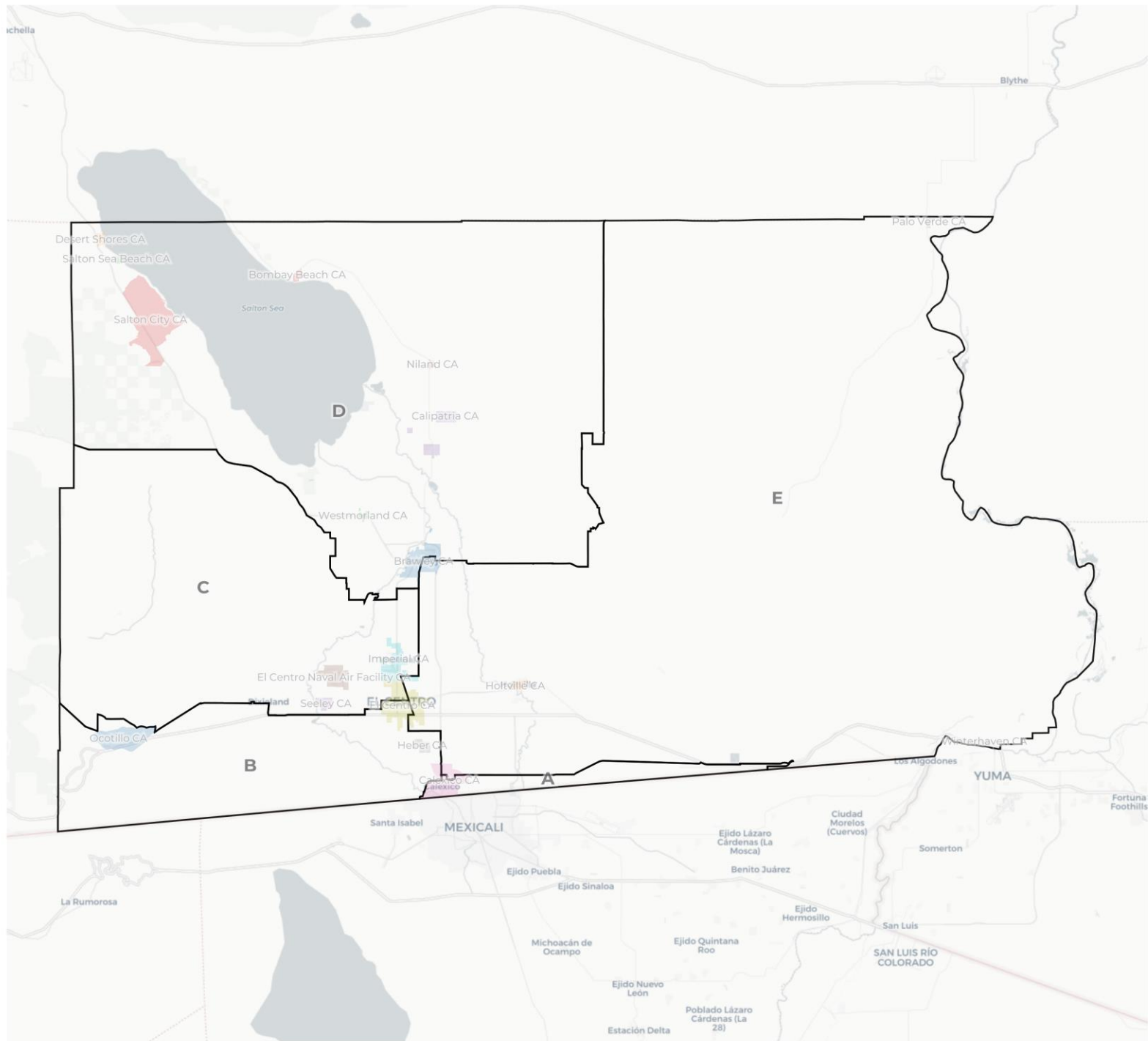






Imperial County

Draft Plan 3 with Cities



From COI to Draft Maps

Getting from input to new proposed maps

All maps approved as “Draft” maps will be placed on redistricting website for public feedback.

- Written input
- Public comment and next hearing
- Potential map changes in DistrictR tool

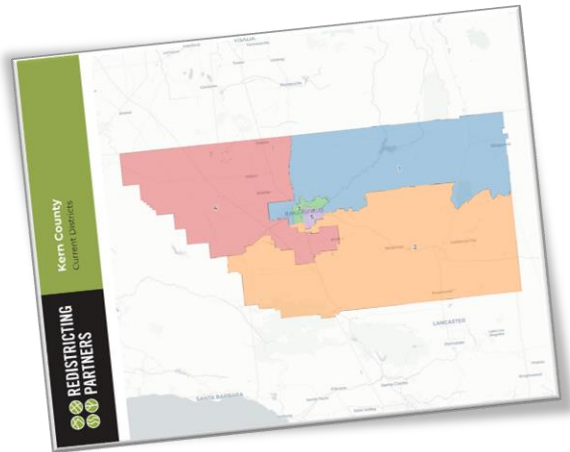


From COI to Draft Maps

Getting from input to new proposed maps

Future hearings will allow for changes to the Drafts prior to adoption

- Hearing on draft maps
- Selection on final proposed draft with any changes
- Up/Down vote on single plan by December 15th





**REDISTRICTING
PARTNERS**