

# Imperial County 2021 Redistricting



# The Redistricting Process

## The Fair Maps Act

Imperial County is required to hold at least four hearings under the Fair Maps Act (FMA).

- One to two pre-map hearings to collect community of interest testimony
- Two map hearings to discuss proposed maps, the second hearing can be the final if no changes are made to the maps presented
- An optional final hearing to pass the final map

# Traditional Redistricting Principles

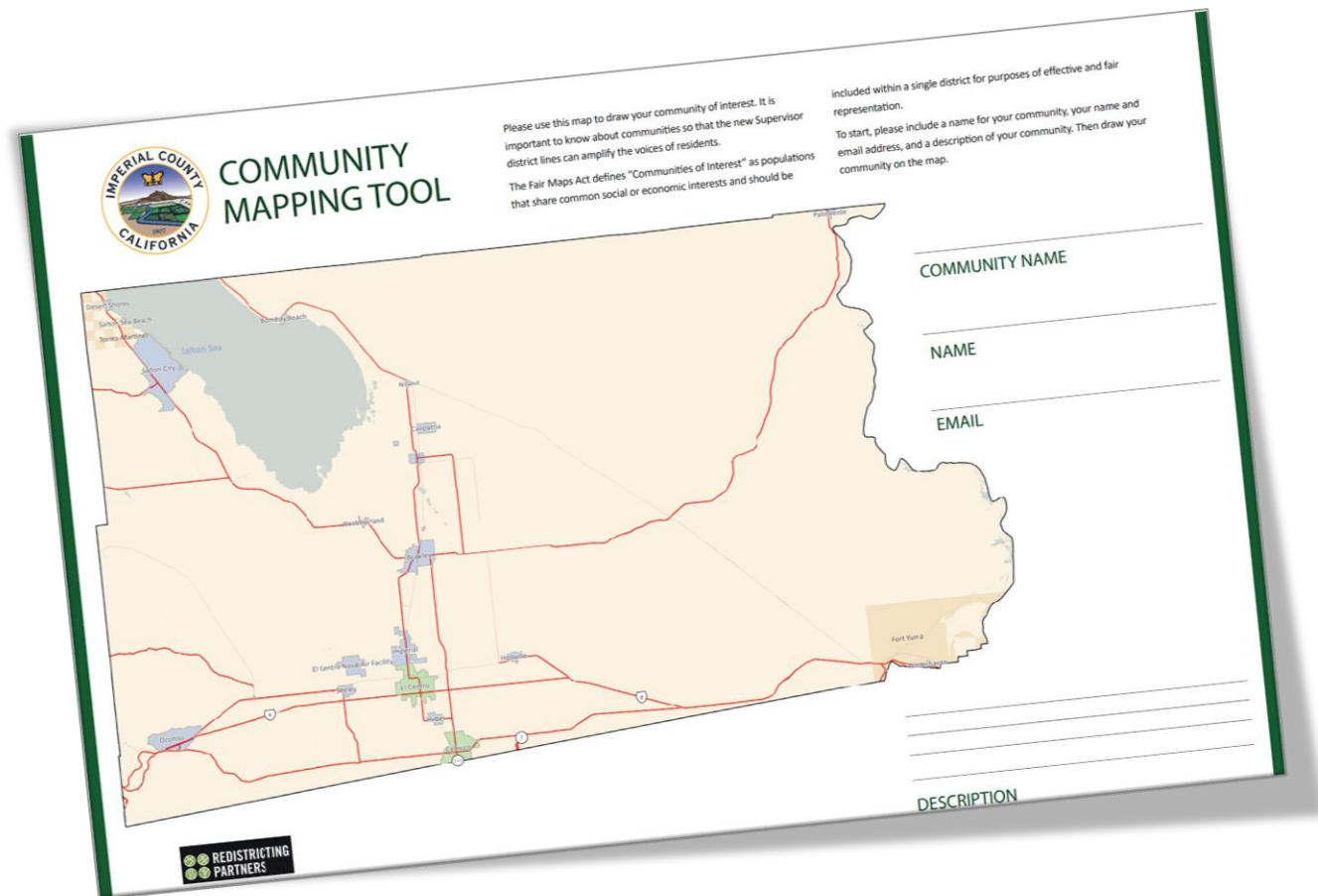
Preventing a Districting from becoming a Gerrymander


There are a number of criteria that have been used nationally and upheld by courts.

- Relatively equal size - people, not citizens
- Contiguous – districts should not hop/jump
- Maintain “*communities of interest*”
- Follow city and census designated place boundaries
- Keep districts compact – appearance/function

# Map Creation

Tools for identifying communities and draft maps



 **COMMUNITY MAPPING TOOL**

Please use this map to draw your community of interest. It is important to know about communities so that the new Supervisor district lines can amplify the voices of residents.

The Fair Maps Act defines "Communities of Interest" as populations that share common social or economic interests and should be included within a single district for purposes of effective and fair representation.


To start, please include a name for your community, your name and email address, and a description of your community. Then draw your community on the map.

COMMUNITY NAME \_\_\_\_\_

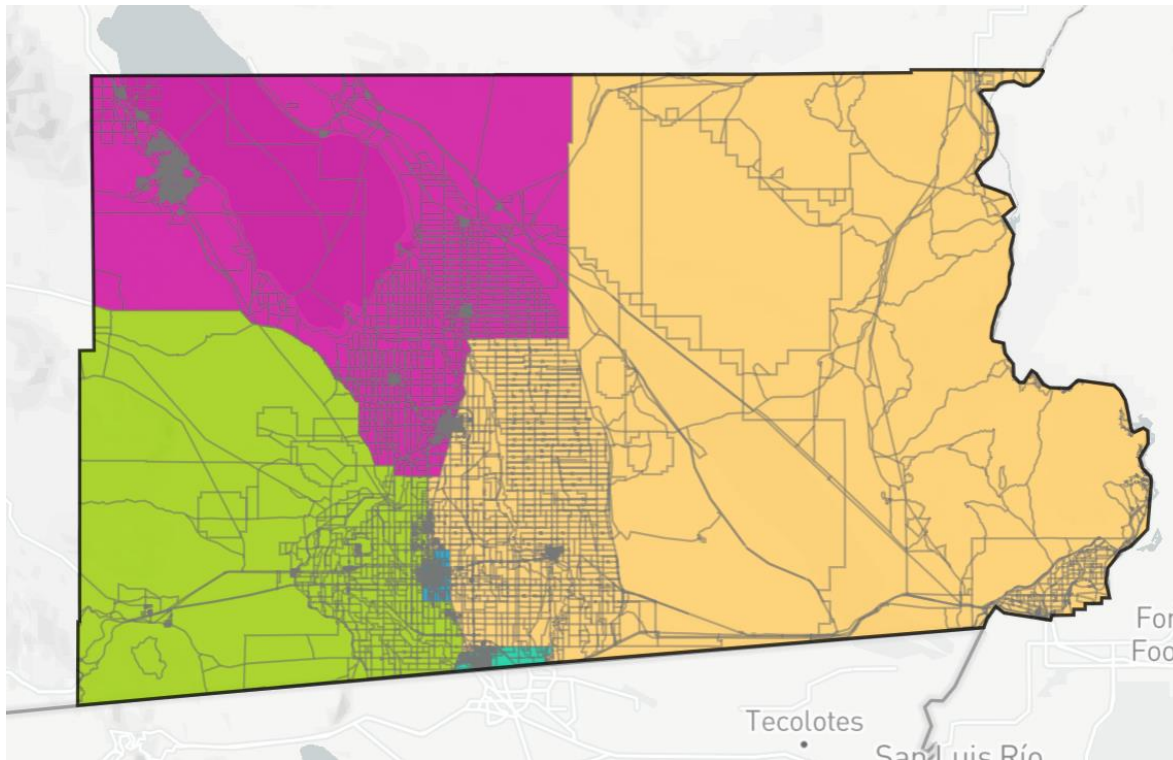
NAME \_\_\_\_\_

EMAIL \_\_\_\_\_

DESCRIPTION \_\_\_\_\_



# Map Submissions



The Best Plan Ever  
ID: 49036

Blue: 36,184

Yellow: 34,689

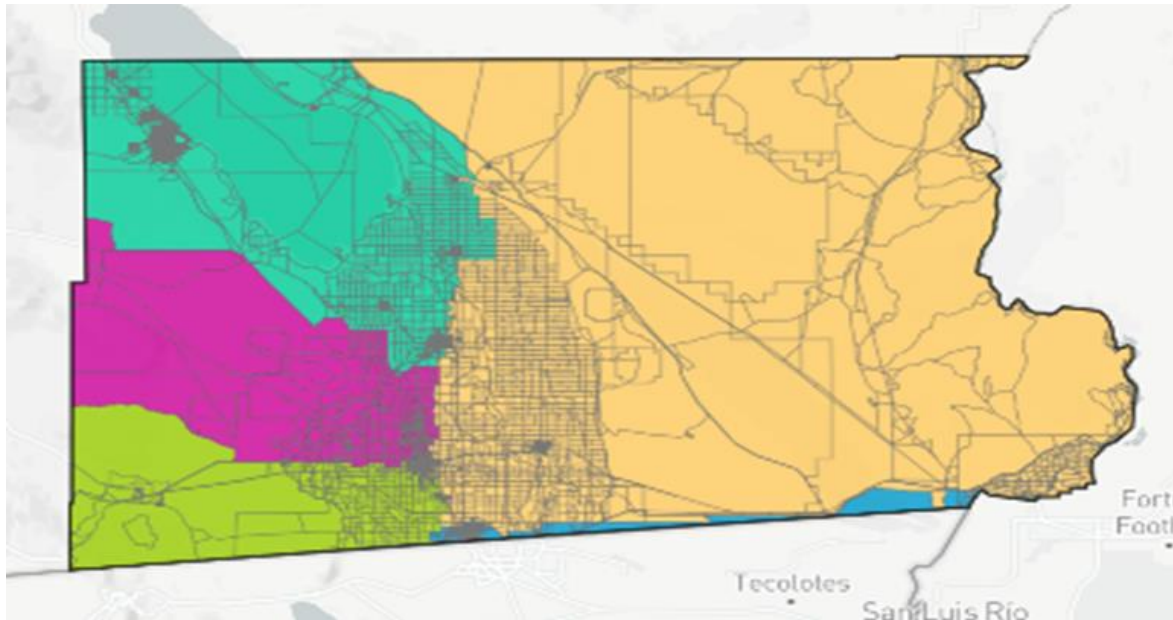
Teal: 36,789

Green: 33,088

Pink: 32,871

Deviation: 5.94%

# Map Submissions



True Representation  
ID: 52590

Blue: 36,634

Yellow: 27,352

Teal: 38,439

Green: 39,273

Pink: 31,930

Deviation: 21.23%

# Map Submissions

Example1

ID: 55241

Blue: 35,592

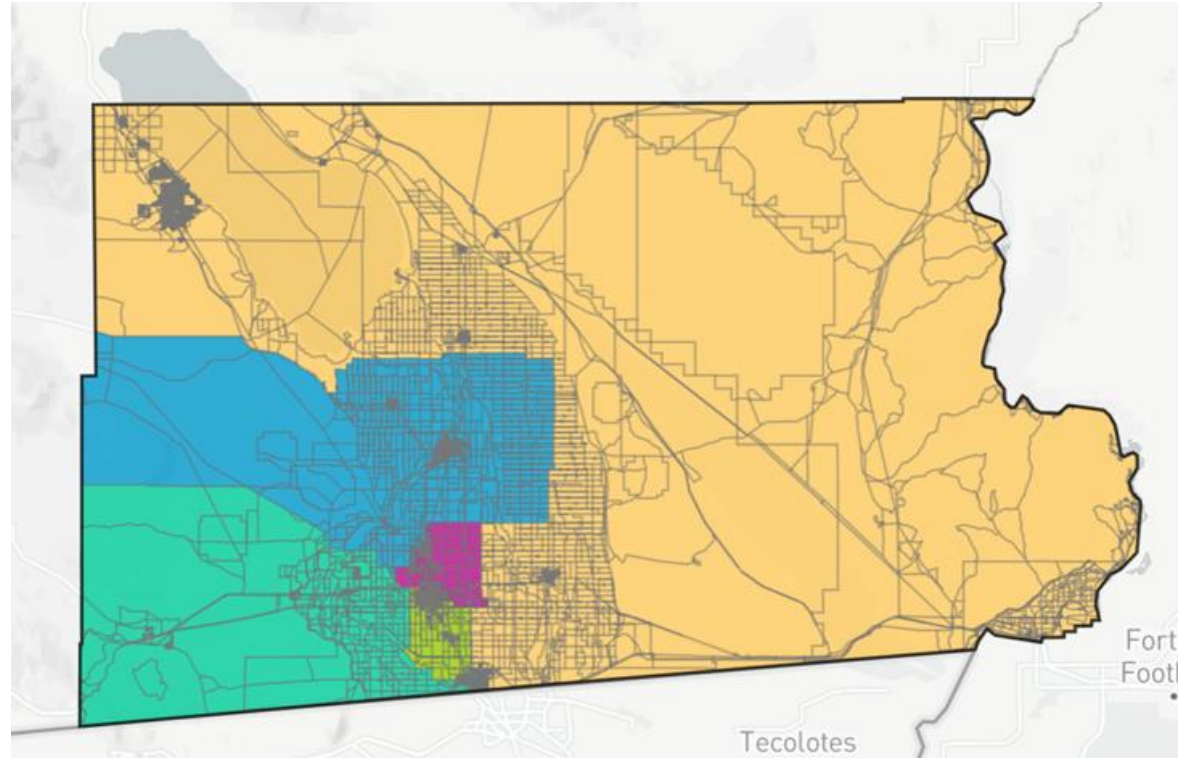
Yellow: 33,636

Teal: 33,232

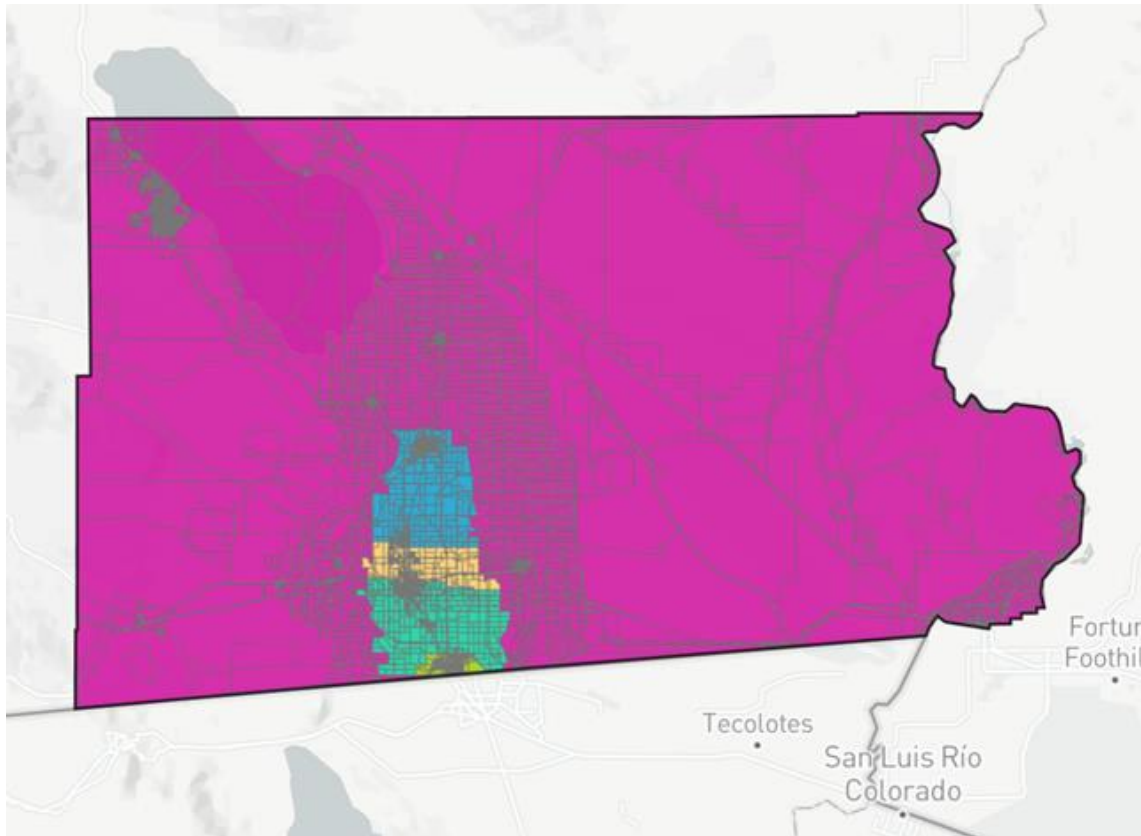
Green: 35,308

Pink: 35,839

Deviation: 4.3%



# Map Submissions



Example2

ID: 55336

Blue: 35,401

Yellow: 35,409

Teal: 35,383

Green: 37,620

Pink: 29,439

Deviation: 15.22%



# Map Submissions

This 1

ID: 55407

Blue: 33,326

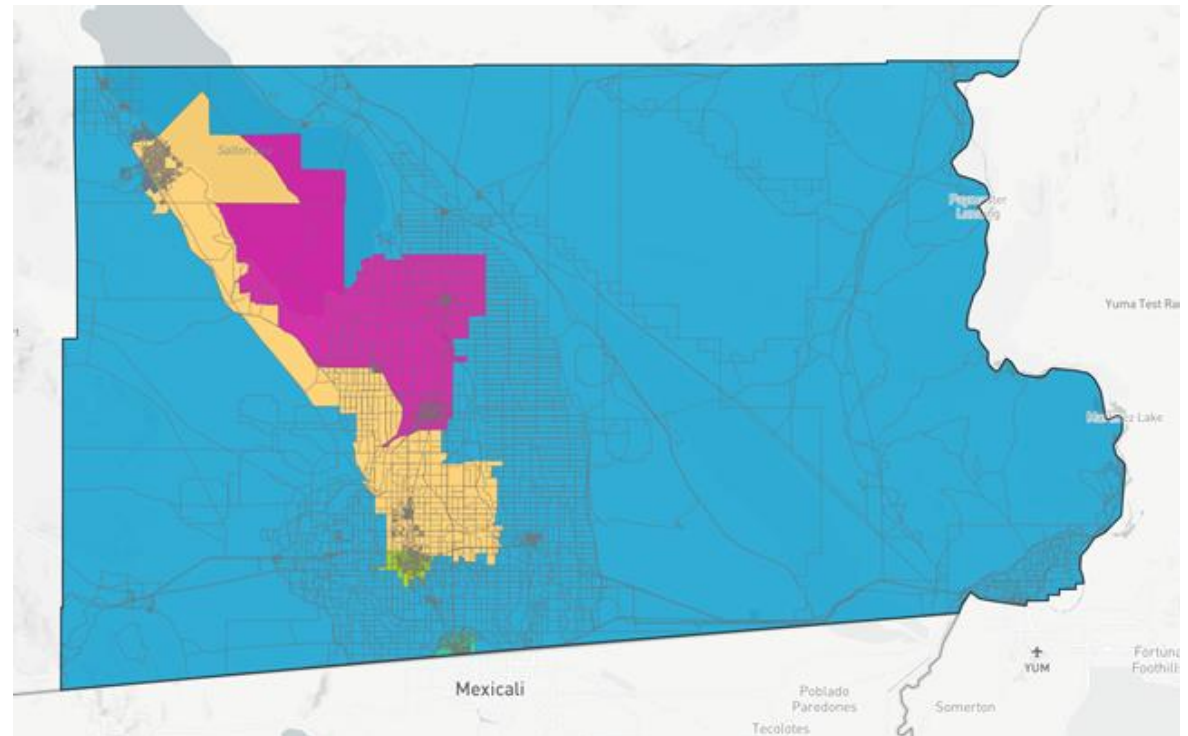
Yellow: 35,481

Teal: 36,319

Green: 36,150

Pink: 32,346

Deviation: 6.85%



# Map Submissions

The Deluxe Plan

ID: 58997

Blue: 34,299

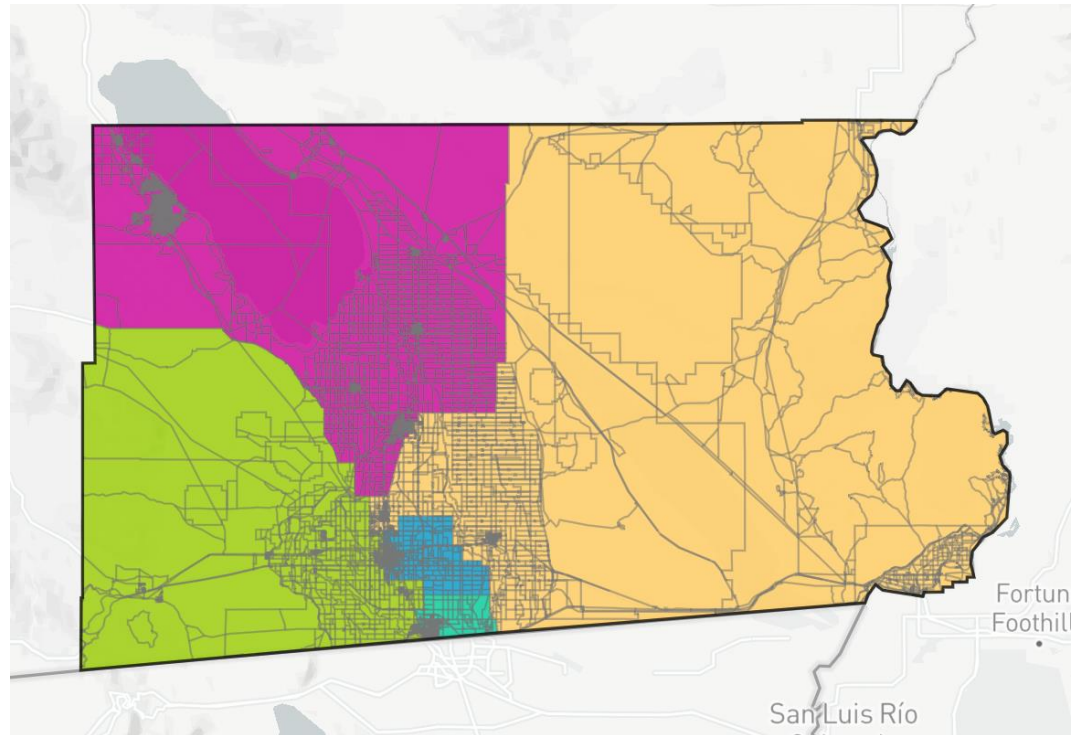
Yellow: 34,469

Teal: 35,583

Green: 34,993

Pink: 34,284

Deviation: 2.47%



# Map Submissions

ID: 59850

Blue: 33,466

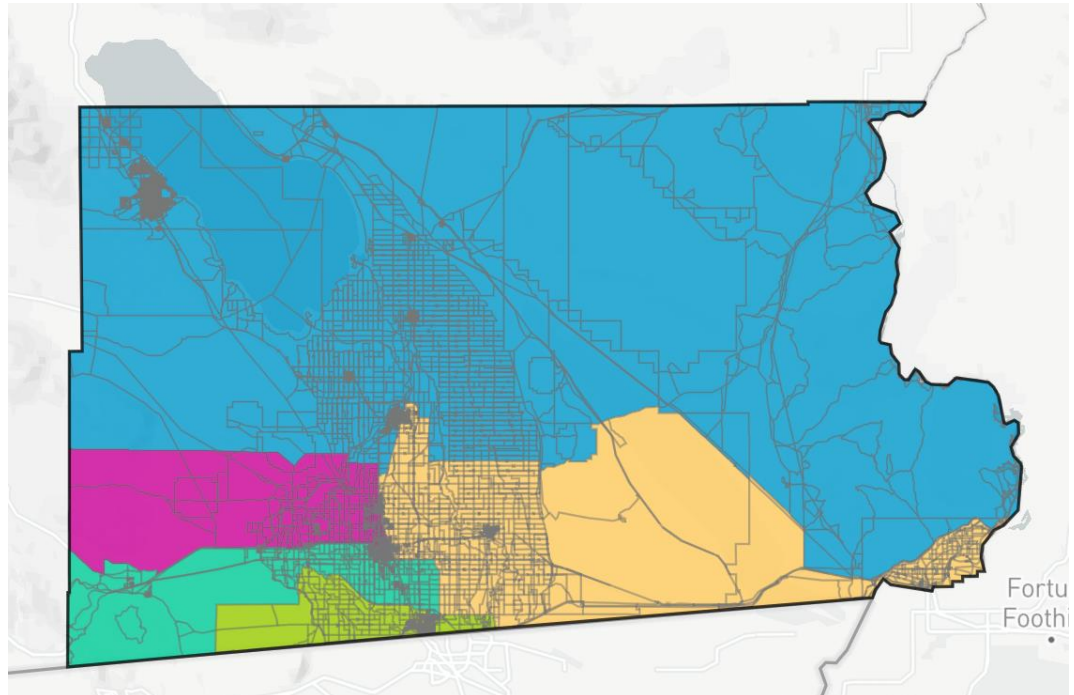
Yellow: 34,910

Teal: 35,752

Green: 35,018

Pink: 34,482

Deviation: 3.63%



# Map Submissions

Allow Each City its district

ID: 63518

Blue: 35,659

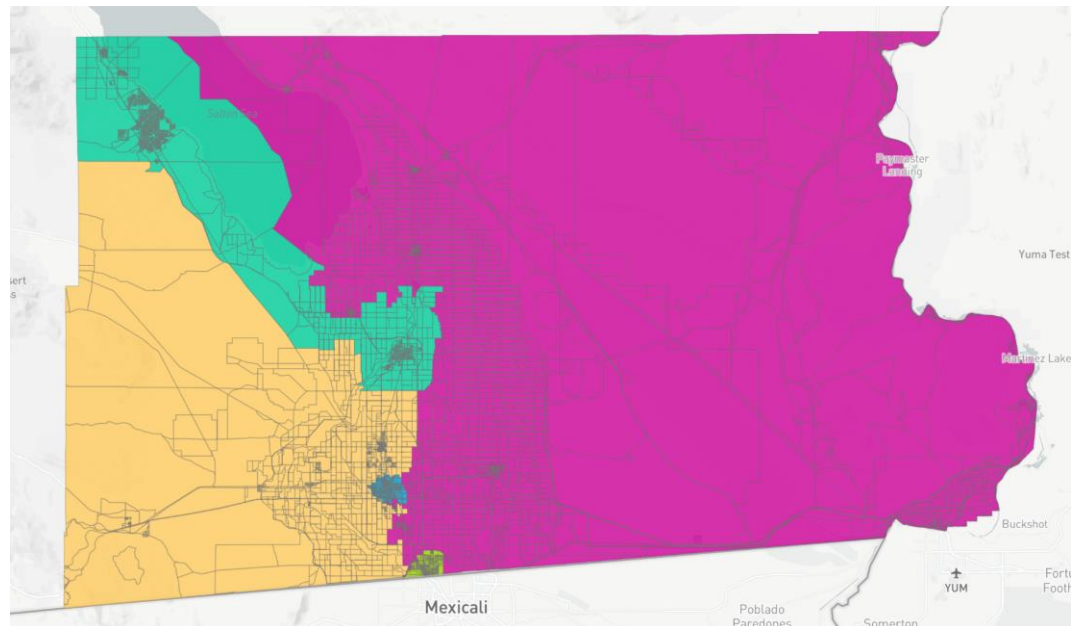
Yellow: 33,507

Teal: 34,223

Green: 35,963

Pink: 34,212

Deviation: 3.56%



# Map Submissions

Fair Community Representation

ID: 63538

Blue: 33,802

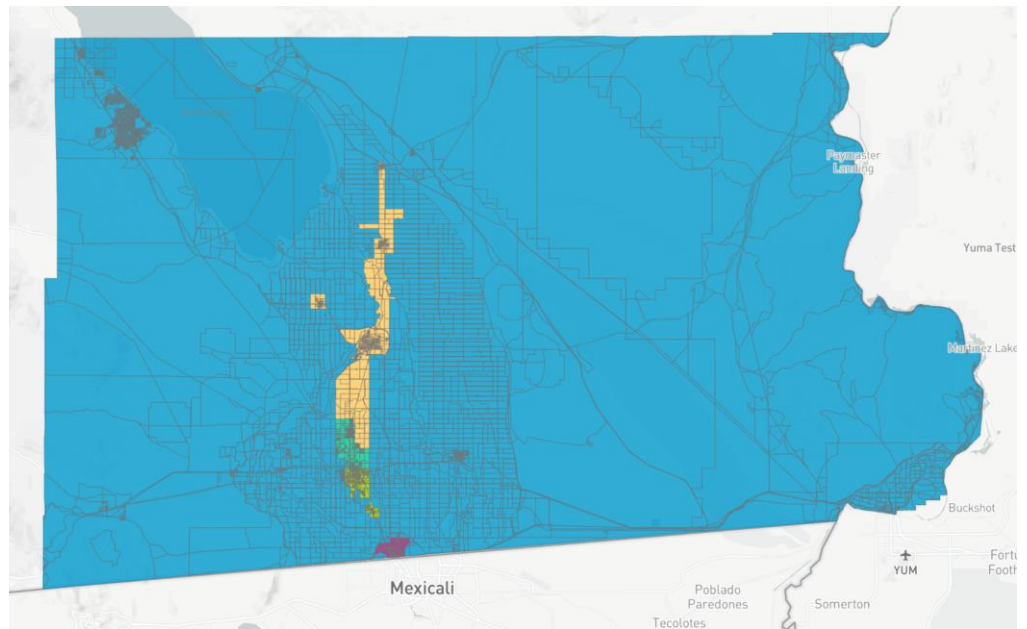
Yellow: 33,658

Teal: 33,948

Green: 34,907

Pink: 37,313

Deviation: 7.45%



# Map Submissions

Fair Valley Redistrict Plan

ID: 64235

Blue: 34,698

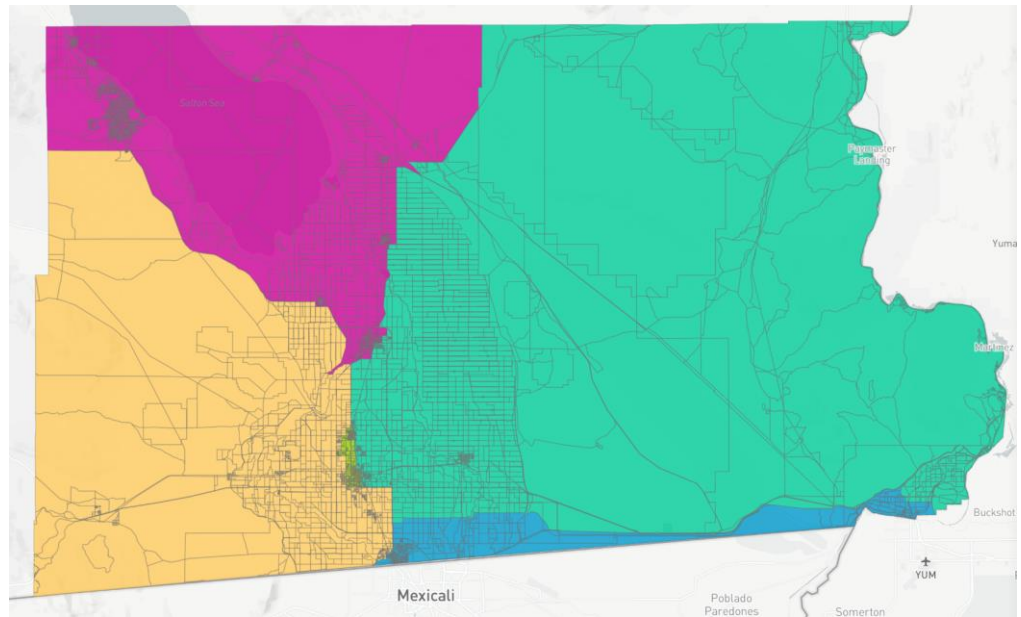
Yellow: 34,870

Teal: 34,554

Green: 34,468

Pink: 35,038

Deviation: 0.9%



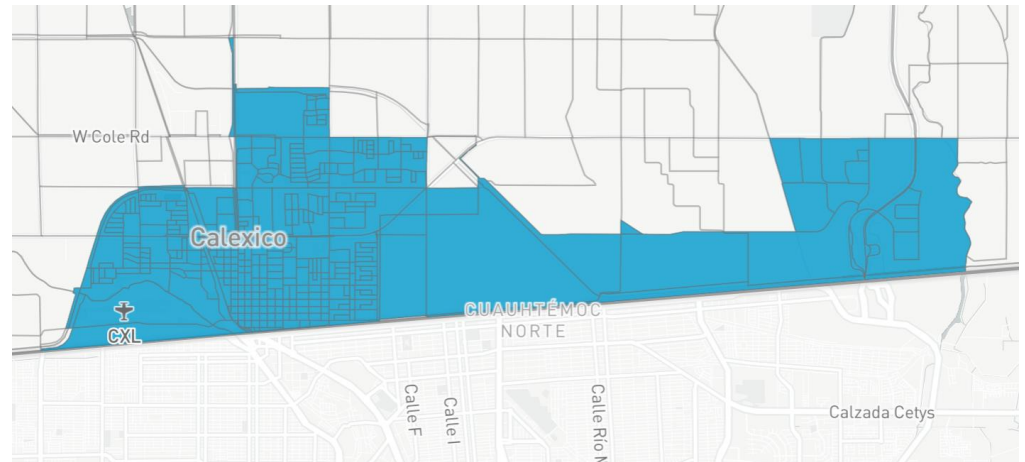
# Map Submissions

Proposed District 1, 2021

ID: 63639

Blue: 38,366

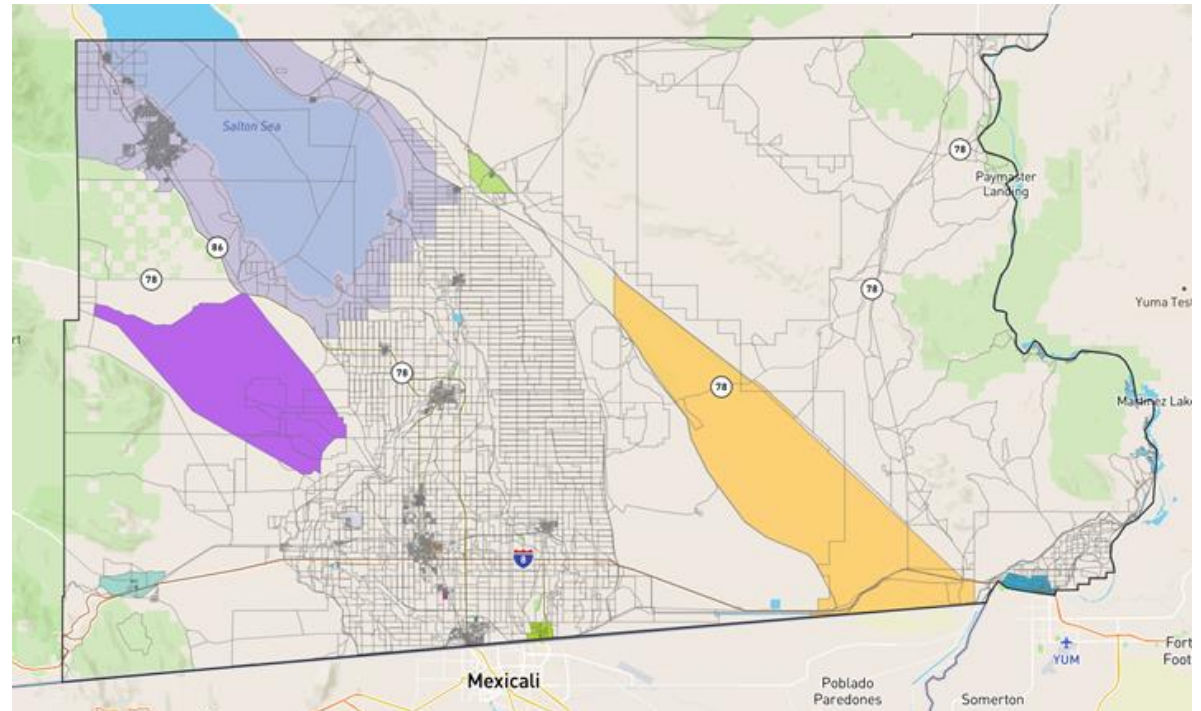
Deviation: 10.48%



# Map Submissions

RAC COIs  
ID: 52168

This COI Map includes  
12 communities of  
interest.





# Map Submissions

Do NOT Bundle ports of entry together!

ID: 61033

Blue: Calexico West Port of Entry

Yellow: Calexico East Port of Entry

Teal: Andrade/Algodones Port of Entry

Important Places:

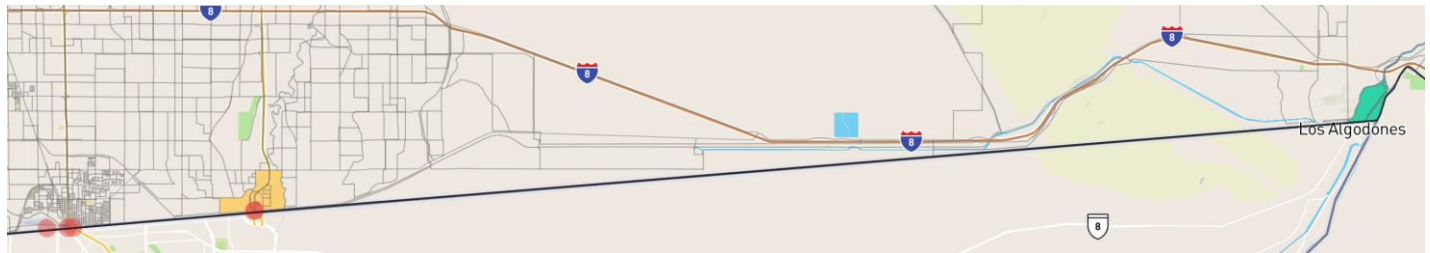
Calexico West Port of Entry

Commercial Port of Entry

Passenger Port of Entry

Pedestrian Border Crossing

Calexico Outlets

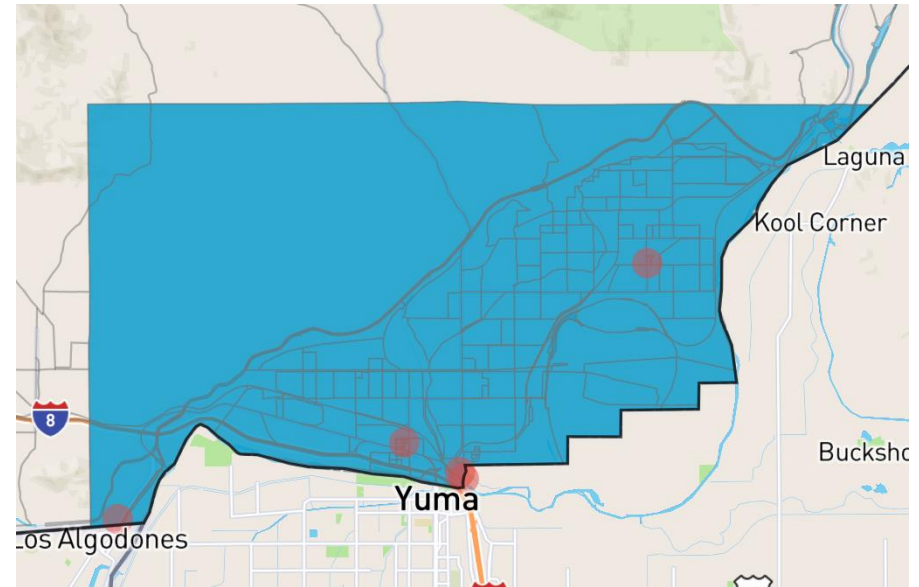


# Map Submissions

Fort Yuma/Winterhaven

ID: 61038

“Keep the Fort Yuma Reservation and the Winterhaven, Bard, and Andrade communities together. This area is unique enough from other areas of the county. It has special considerations regarding water, Native Americans, tourism, and its proximity to Arizona.”



Important Places:

Border Crossing

Winterhaven

Indian Mission

Historical Buildings

Bard

# Map Submissions

Calexico Residential Areas

ID: 61073

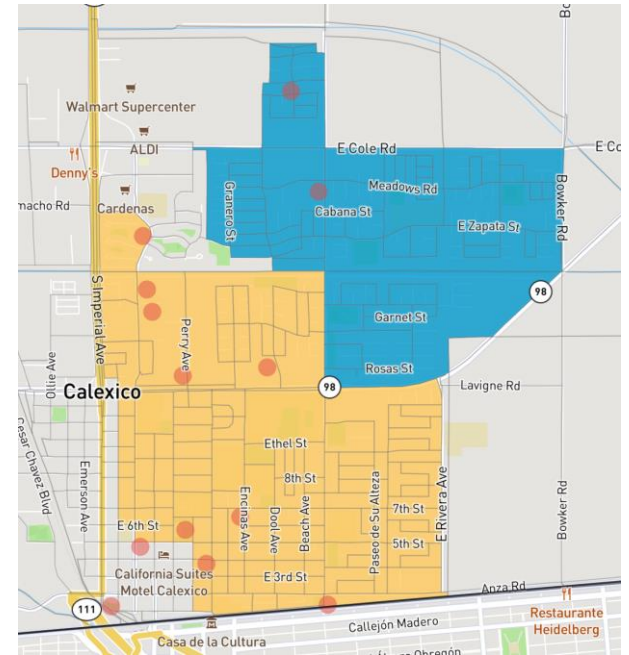
Blue: Residential Calexico Area

Yellow: Core Calexico

## Important Places:

Alejandro Rivera Senior Citizen  
Apartments  
Calexico Senior Apartments  
Luis Moreno Senior Apartments  
El Quitero Apartments  
Casa Del Retiro Senior Apartments  
Our Lady Guadalupe Shelter

Homeless Camp  
Homeless Park  
Homeless Area  
Heartstone Developments  
Pichoneras  
Algeria – Adult Care Center  
Villa De La Flores Senior Apartments

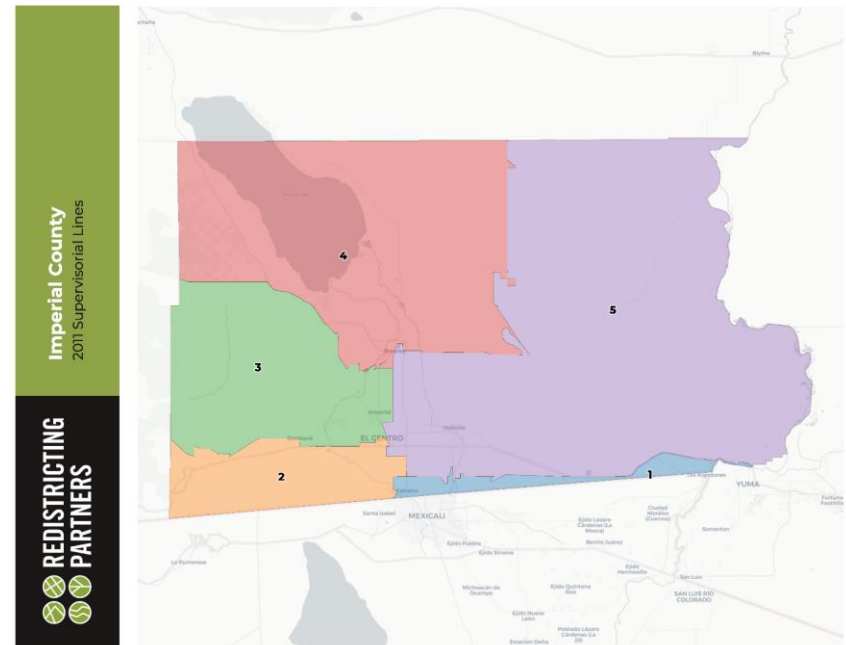


# Current Districts

Review of current seats with new census data

Packet includes three ways to view current districts

- **Overview Page**
- **Data Tables**
- **Individual district pages with data**

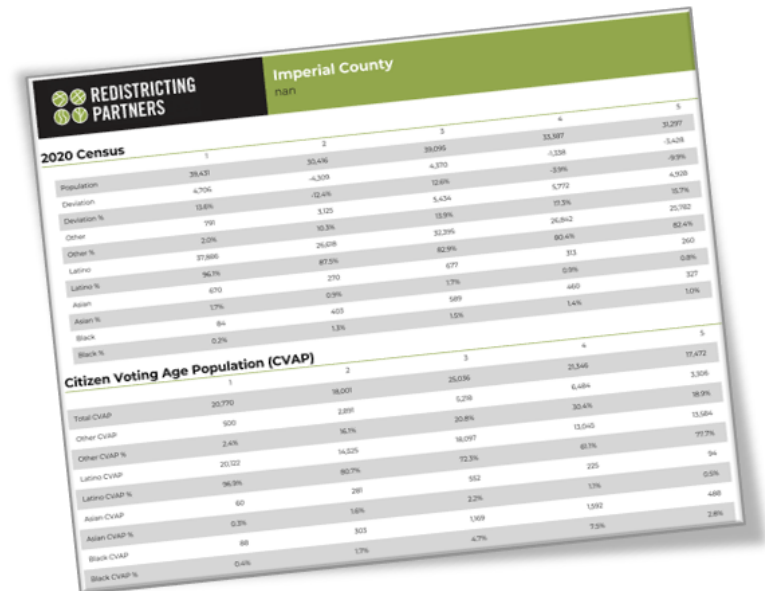


# Current Districts

Review of current seats with new census data

Packet includes three ways to view current districts

- Overview Page
- **Data Tables**
- Individual district pages with data



		Imperial County				
		nan				
2020 Census		1	2	3	4	5
Population	38,431	30,446	39,096	33,987	34,287	
Deviation	-4,706	-12.4%	4,370	-1,358	-99%	
Deviation %	13.6%	3.12%	5.43%	3.7%	4.30%	
Other	79	10.3%	11.9%	26,812	82.4%	
Other %	37,886	26.0%	82.9%	80.4%	82.4%	
Latino	96.7%	270	677	313	360	
Latino %	670	2.1%	1.7%	0.9%	0.8%	
Asian	1.7%	405	589	460	10%	
Asian %	84	1.3%	1.5%	1.4%	10%	
Black	0.2%					
Black %						
Citizen Voting Age Population (CVAP)		1	2	3	4	5
Total CVAP	20,770	18,001	25,036	23,346	17,472	
Other CVAP	900	16.7%	20.8%	6,484	3.0%	
Other CVAP %	2.4%	14,205	18,087	13,045	13,084	
Latino CVAP	20,022	80.7%	72.3%	81.1%	77.7%	
Latino CVAP %	96.3%	281	952	225	94	
Latino CVAP %	60	2.8%	2.2%	1%	0.5%	
Asian CVAP	0.3%	303	1,009	1,052	488	
Asian CVAP %	88	1.7%	4.7%	7.3%	2.8%	
Black CVAP	0.4%					
Black CVAP %						

# Current Districts

Review of current seats with new census data

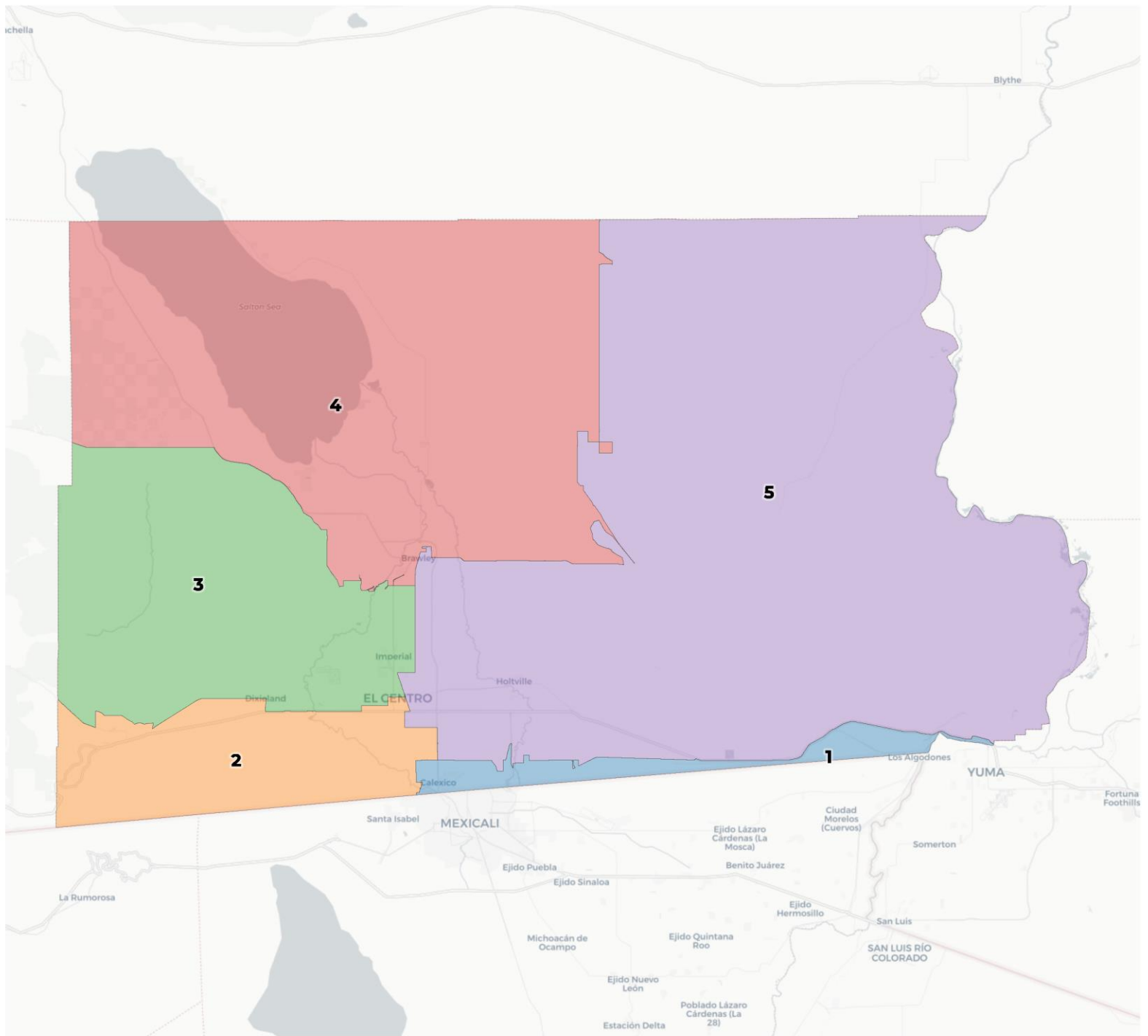
Packet includes three ways to view current districts

- Overview Page
- Data Tables
- **Individual district pages with data**



**REDISTRICTING  
PARTNERS**

**Imperial County  
2011 Supervisorial Lines**



## 2020 Census

	1	2	3	4	5
Population	39,759	30,415	39,097	33,388	30,967
Deviation	5,034	-4,310	4,372	-1,337	-3,758
Deviation %	14.5%	-12.4%	12.6%	-3.9%	-10.8%
Other	961	3,125	5,434	5,772	4,758
Other %	2.4%	10.3%	13.9%	17.3%	15.4%
Latino	38,040	26,617	32,397	26,843	25,626
Latino %	95.7%	87.5%	82.9%	80.4%	82.8%
Asian	673	270	677	313	257
Asian %	1.7%	0.9%	1.7%	0.9%	0.8%
Black	85	403	589	460	326
Black %	0.2%	1.3%	1.5%	1.4%	1.1%

## Citizen Voting Age Population (CVAP)

	1	2	3	4	5
Total CVAP	20,937	18,004	25,040	21,347	17,298
Other CVAP	605	2,893	5,220	6,484	3,197
Other CVAP %	2.9%	16.1%	20.8%	30.4%	18.5%
Latino CVAP	20,182	14,526	18,099	13,046	13,520
Latino CVAP %	96.4%	80.7%	72.3%	61.1%	78.2%
Asian CVAP	60	281	552	225	94
Asian CVAP %	0.3%	1.6%	2.2%	1.1%	0.5%
Black CVAP	90	303	1,169	1,592	486
Black CVAP %	0.4%	1.7%	4.7%	7.5%	2.8%



## 2020 Census

	1	2	3	4	5
Population	39,759	30,415	39,097	33,388	30,967
Deviation	5,034	-4,310	4,372	-1,337	-3,758
Deviation %	14.5%	-12.4%	12.6%	-3.9%	-10.8%
Other	961	3,125	5,434	5,772	4,758
Other %	2.4%	10.3%	13.9%	17.3%	15.4%
Latino	38,040	26,617	32,397	26,843	25,626
Latino %	95.7%	87.5%	82.9%	80.4%	82.8%
Asian	673	270	677	313	257
Asian %	1.7%	0.9%	1.7%	0.9%	0.8%
Black	85	403	589	460	326
Black %	0.2%	1.3%	1.5%	1.4%	1.1%

## Citizen Voting Age Population (CVAP)

	1	2	3	4	5
Total CVAP	20,937	18,004	25,040	21,347	17,298
Other CVAP	605	2,893	5,220	6,484	3,197
Other CVAP %	2.9%	16.1%	20.8%	30.4%	18.5%
Latino CVAP	20,182	14,526	18,099	13,046	13,520
Latino CVAP %	96.4%	80.7%	72.3%	61.1%	78.2%
Asian CVAP	60	281	552	225	94
Asian CVAP %	0.3%	1.6%	2.2%	1.1%	0.5%
Black CVAP	90	303	1,169	1,592	486
Black CVAP %	0.4%	1.7%	4.7%	7.5%	2.8%

**2020 Census**

	1	2	3	4	5
Population	39,759	30,415	39,097	33,388	30,967
Deviation	5,034	-4,310	4,372	-1,337	-3,758
Deviation %	14.5%	-12.4%	12.6%	-3.9%	-10.8%
Other	961	3,125	5,434	5,772	4,758
Other %	2.4%	10.3%	13.9%	17.3%	15.4%
Latino	38,040	26,617	32,397	26,843	25,626
Latino %	95.7%	87.5%	82.8%	80.4%	82.8%
Asian	11	281	552	313	257
Asian %	0.03%	0.9%	1.4%	0.9%	0.8%
Black	0	303	1,169	460	326
Black %	0.0%	1.0%	3.0%	1.4%	1.1%

The total deviation of the plan is the sum of the absolute values of the highest and lowest districts. *Here the plan deviation is **26.9%***

**Citizen Voting Age Population (CVAP)**

	1	2	3	4	5
Total CVAP	20,937	18,004	25,040	21,347	17,298
Other CVAP	605	2,893	5,220	6,484	3,197
Other CVAP %	2.9%	16.1%	20.8%	30.4%	18.5%
Latino CVAP	20,182	14,526	18,099	13,046	13,520
Latino CVAP %	96.4%	80.7%	72.3%	61.1%	78.2%
Asian CVAP	60	281	552	225	94
Asian CVAP %	0.3%	1.6%	2.2%	1.1%	0.5%
Black CVAP	90	303	1,169	1,592	486
Black CVAP %	0.4%	1.7%	4.7%	7.5%	2.8%

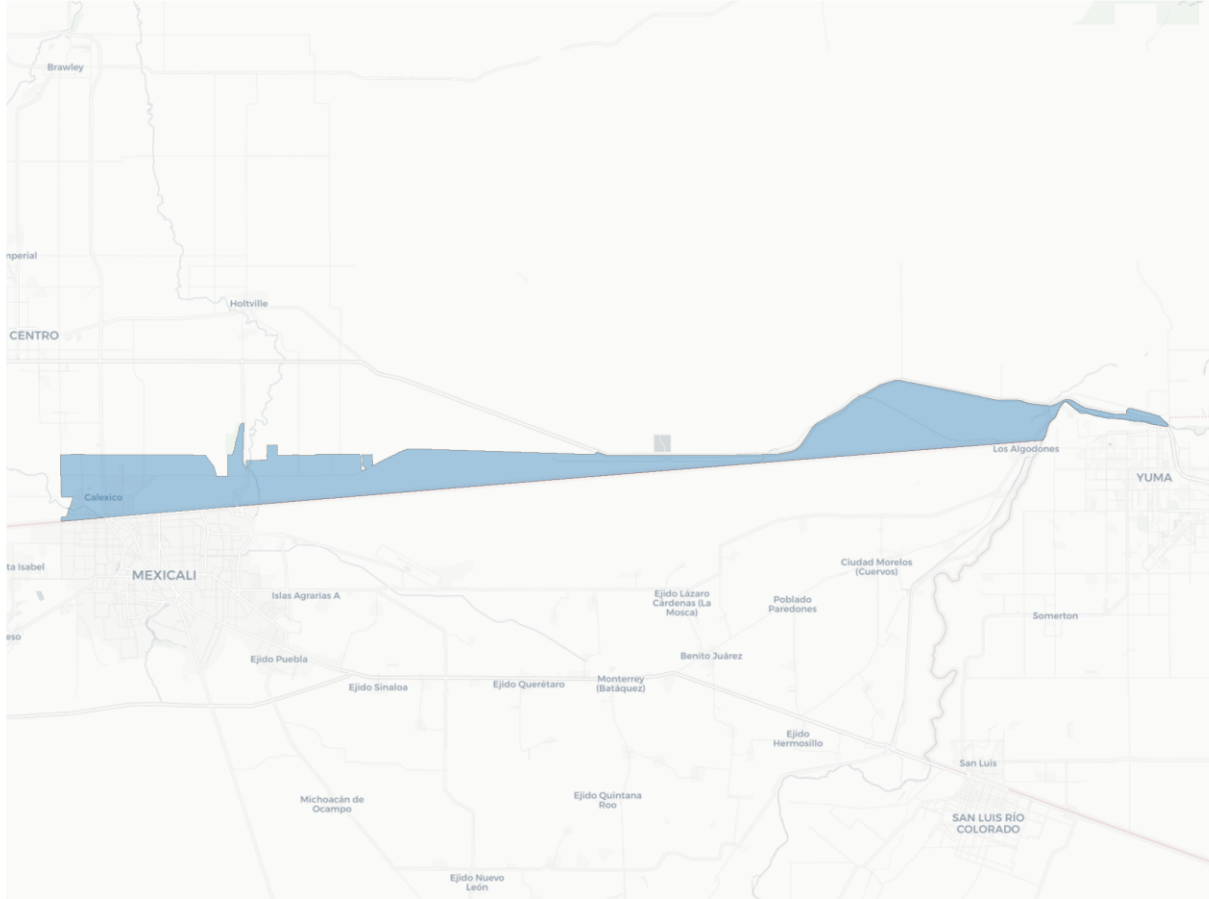
**2020 Census**

	1	2	3	4	5
Population	39,759	30,415	39,097	33,388	30,967
Deviation	5,034	-4,310	4,372	-1,337	-3,758
Deviation %	14.5%	-12.4%	12.6%	-3.9%	-10.8%
Other	961	3,125	5,434	5,772	4,758
Other %	2.4%	10.3%	13.9%	17.3%	15.4%
Latino	38,040	26,617	32,397	26,843	25,626
Latino %	95.7%	87.5%	82.9%	80.4%	82.8%
Asian	673	270	677	313	257
Asian %	1.7%	0.9%	1.7%	0.9%	0.8%
Black	85	403	589	460	326
Black %	0.2%	1.3%	1.5%	1.4%	1.1%

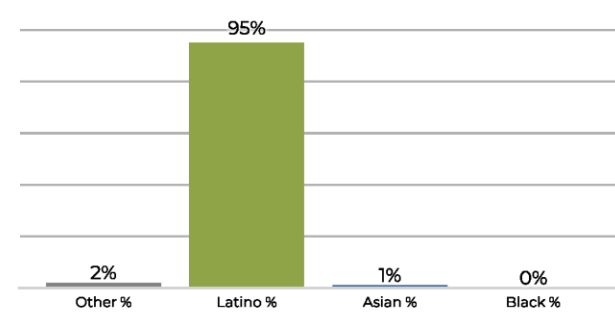
**Citizen Voting Age Population (CVAP)**

	1	2	3	4	5
Total CVAP	20,937	18,004	25,040	21,347	17,298
Other CVAP	605	2,893	5,220	6,484	3,197
Other CVAP %	2.9%	16.1%	20.8%	30.4%	18.5%
Latino CVAP	20,182	14,526	18,099	13,046	13,520
Latino CVAP %	96.4%	80.7%	72.3%	61.1%	78.2%
Asian CVAP	60	281	552	225	94
Asian CVAP %	0.3%	1.6%	2.2%	1.1%	0.5%
Black CVAP	90	303	1,169	1,592	486
Black CVAP %	0.4%	1.7%	4.7%	7.5%	2.8%

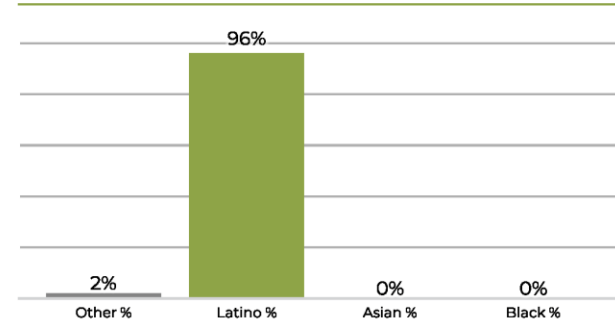
**District 1**



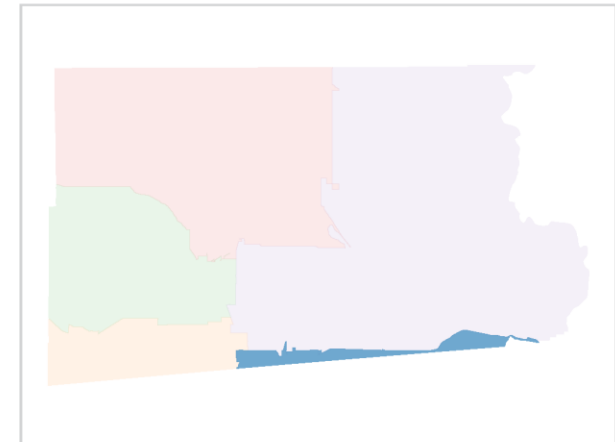
**2020 Census**



**Citizen Voting Age Population**

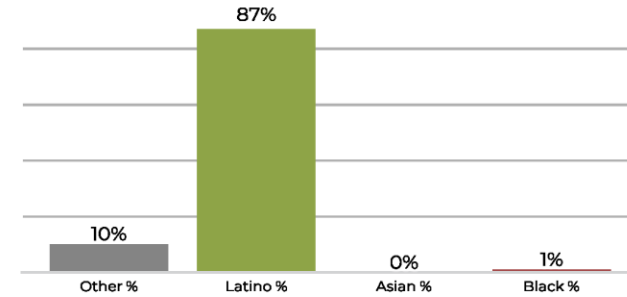


Population	Deviation	Deviation %	Other	Other %	Latino	Latino %	Asian	Asian %	Black	Black %
39,759	5,034	14.5%	961	2.4%	38,040	95.7%	673	1.7%	85	0.2%
Total CVAP	Other CVAP	Other CVAP %	Latino CVAP	Latino CVAP %	Asian CVAP	Asian CVAP %	Black CVAP	Black CVAP %		
20,937	605	2.9%	20,182	96.4%	60	0.3%	90	0.4%		

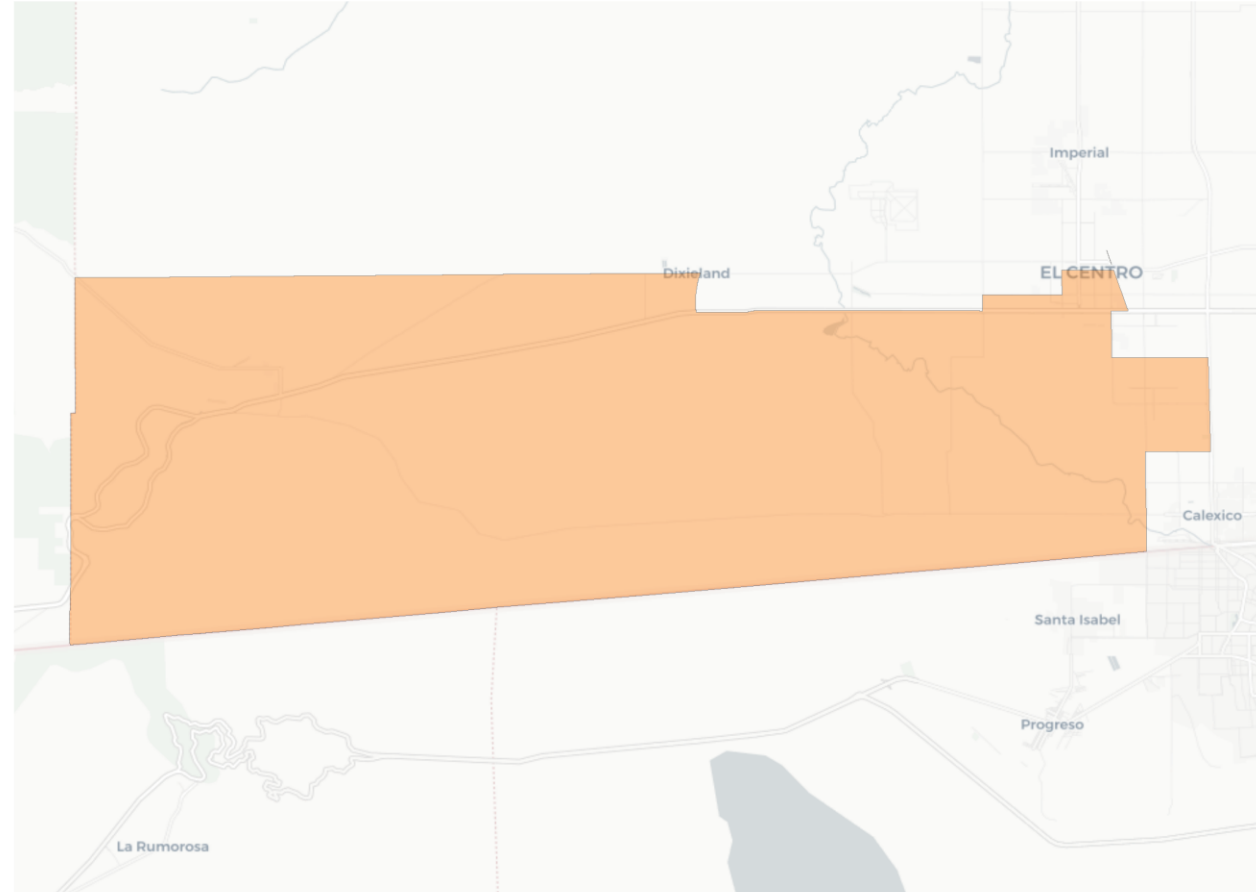
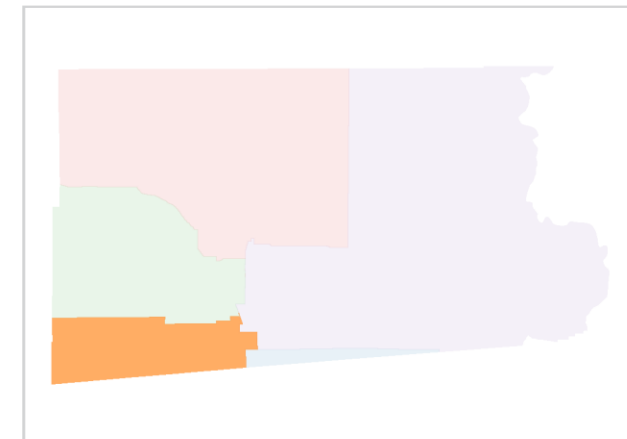
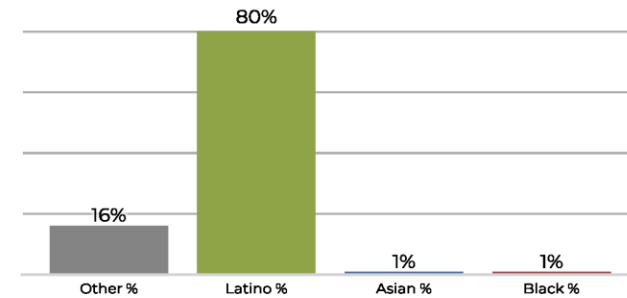


**District 2**

**2020 Census**



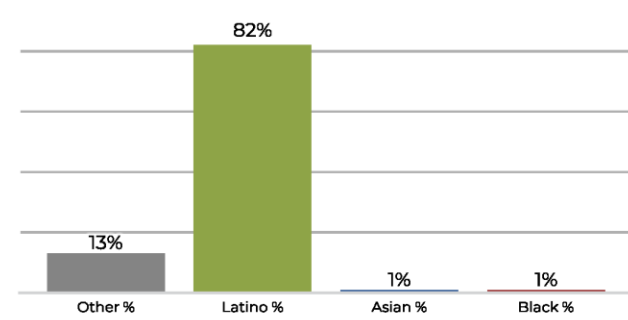
**Citizen Voting Age Population**



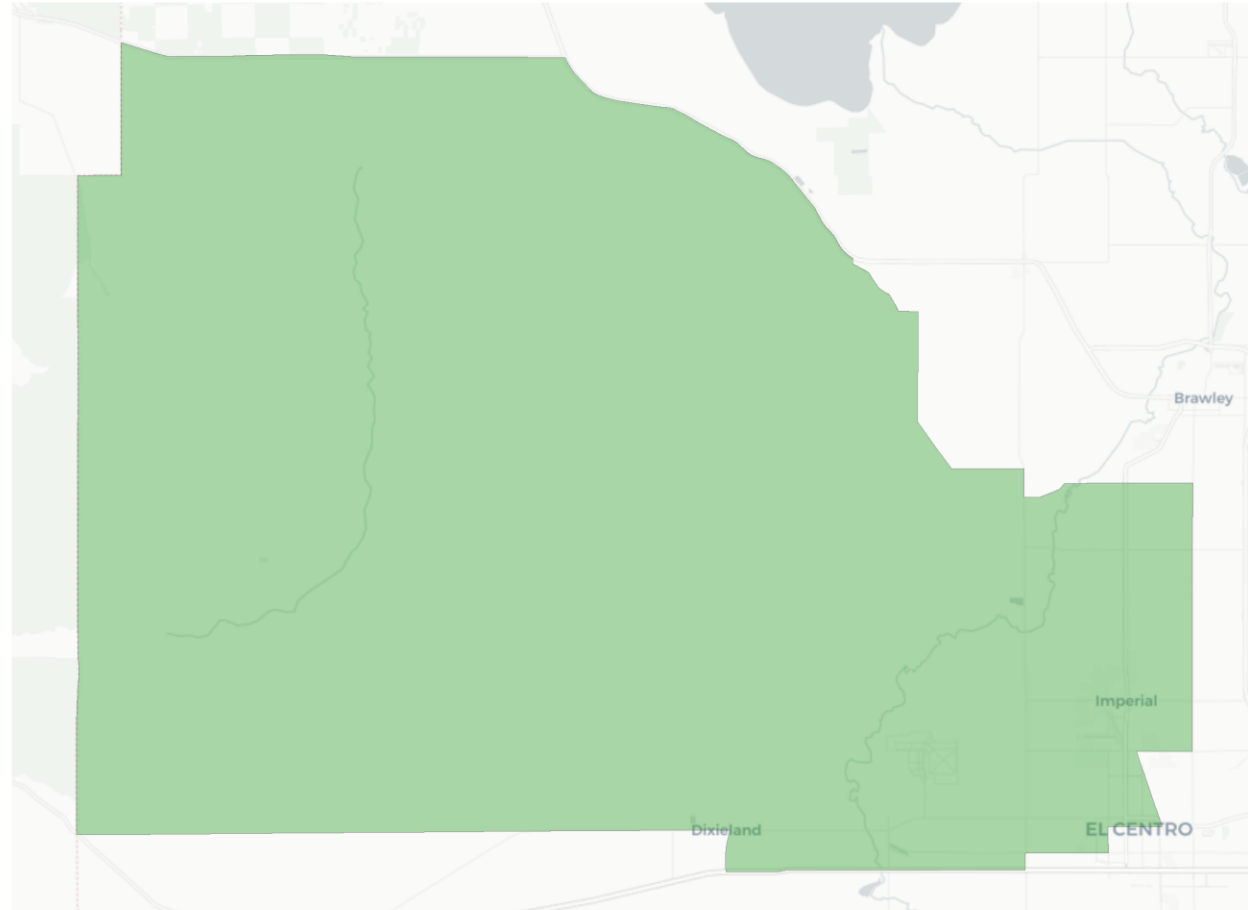
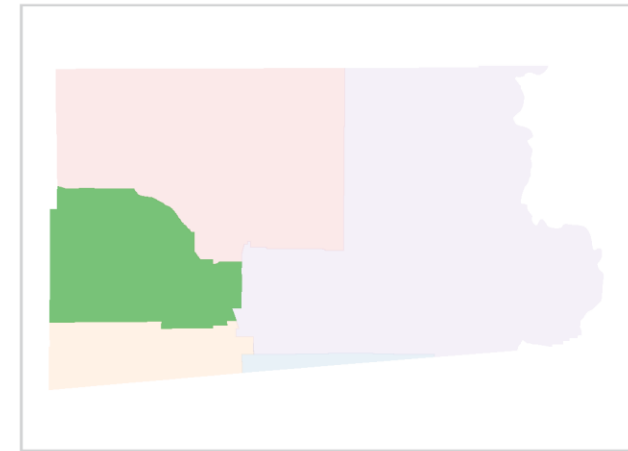
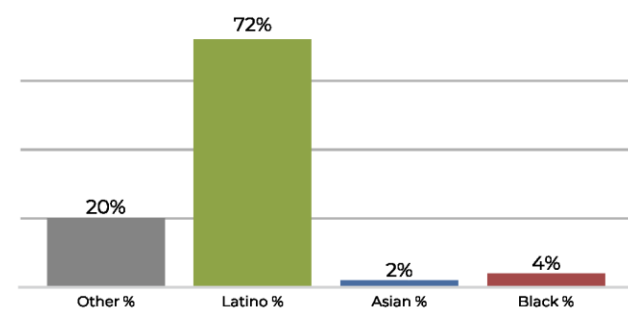
Population	Deviation	Deviation %	Other	Other %	Latino	Latino %	Asian	Asian %	Black	Black %
30,416	-4,309	-12.4%	3,125	10.3%	26,618	87.5%	270	0.9%	403	1.3%
Total CVAP	Other CVAP	Other CVAP %	Latino CVAP	Latino CVAP %	Asian CVAP	Asian CVAP %	Black CVAP	Black CVAP %		
18,001	2,891	16.1%	14,525	80.7%	281	1.6%	303	1.7%		

**District 3**

**2020 Census**



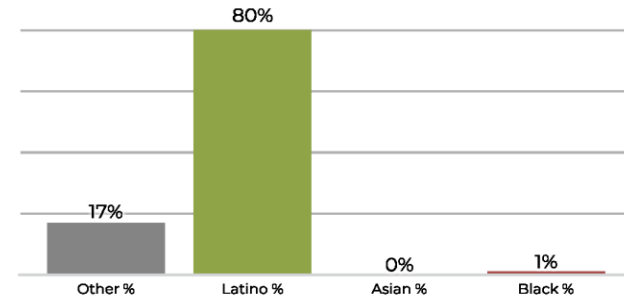
**Citizen Voting Age Population**



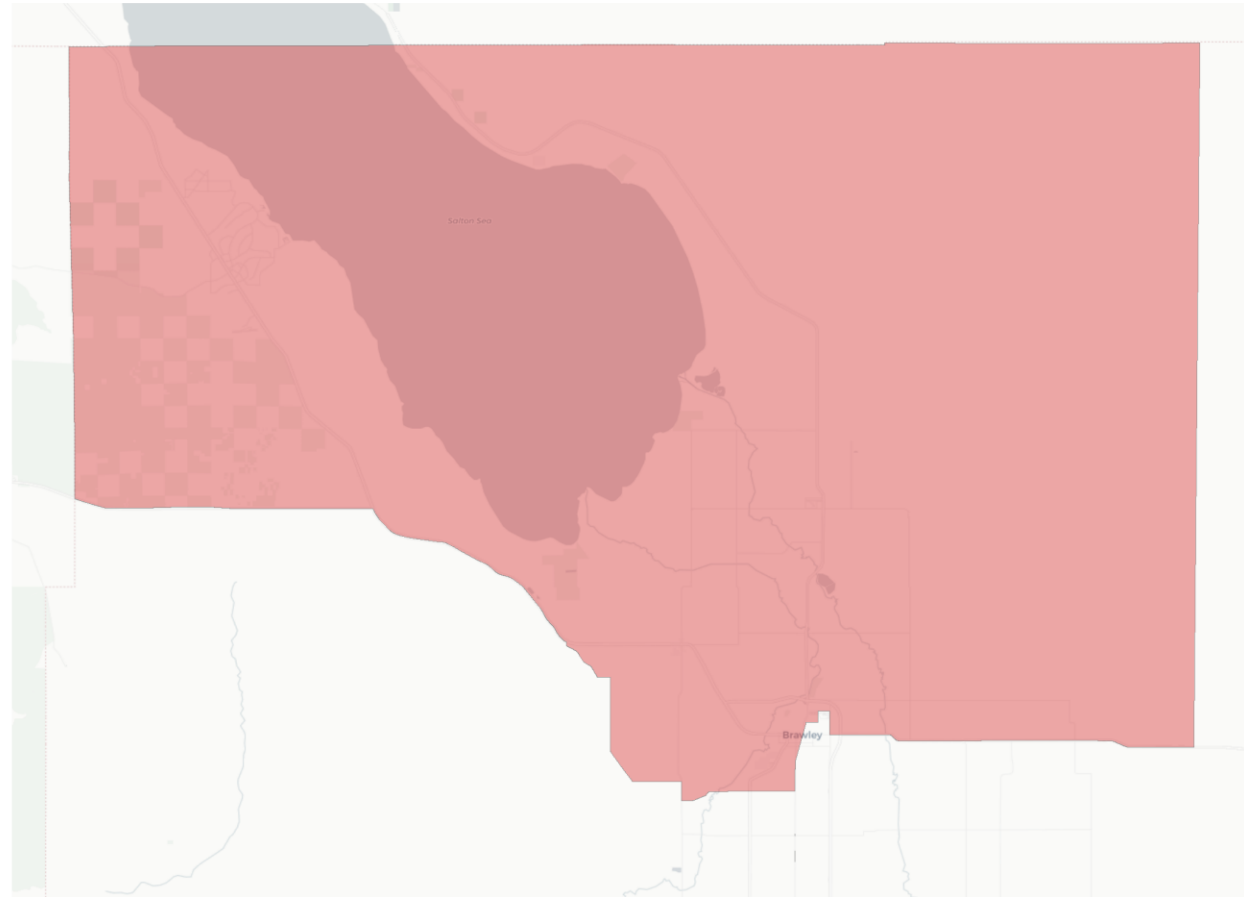
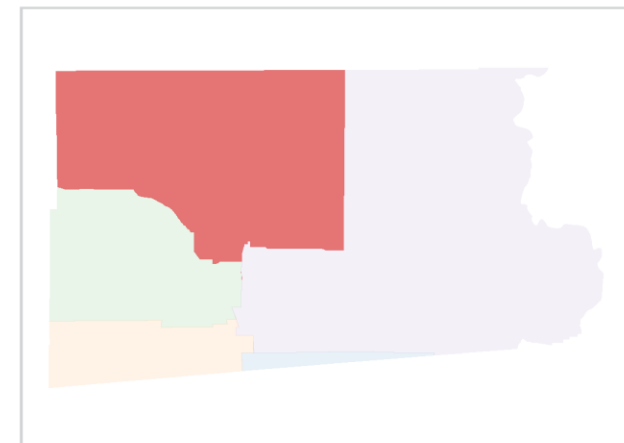
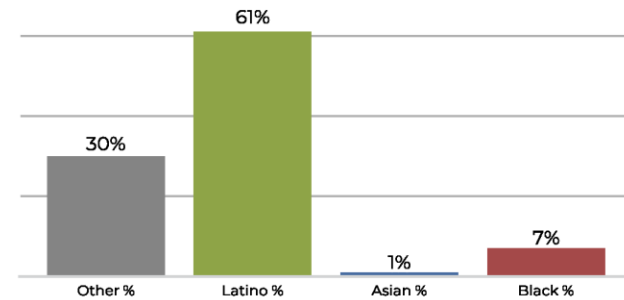
Population	Deviation	Deviation %	Other	Other %	Latino	Latino %	Asian	Asian %	Black	Black %
39,095	4,370	12.6%	5,434	13.9%	32,395	82.9%	677	1.7%	589	1.5%
Total CVAP	Other CVAP	Other CVAP %	Latino CVAP	Latino CVAP %	Asian CVAP	Asian CVAP %	Black CVAP	Black CVAP %		
25,036	5,218	20.8%	18,097	72.3%	552	2.2%	1,169	4.7%		

**District 4**

**2020 Census**



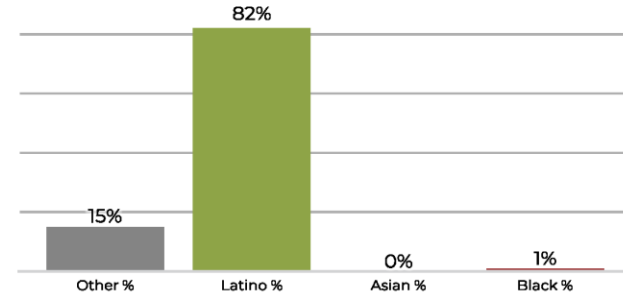
**Citizen Voting Age Population**



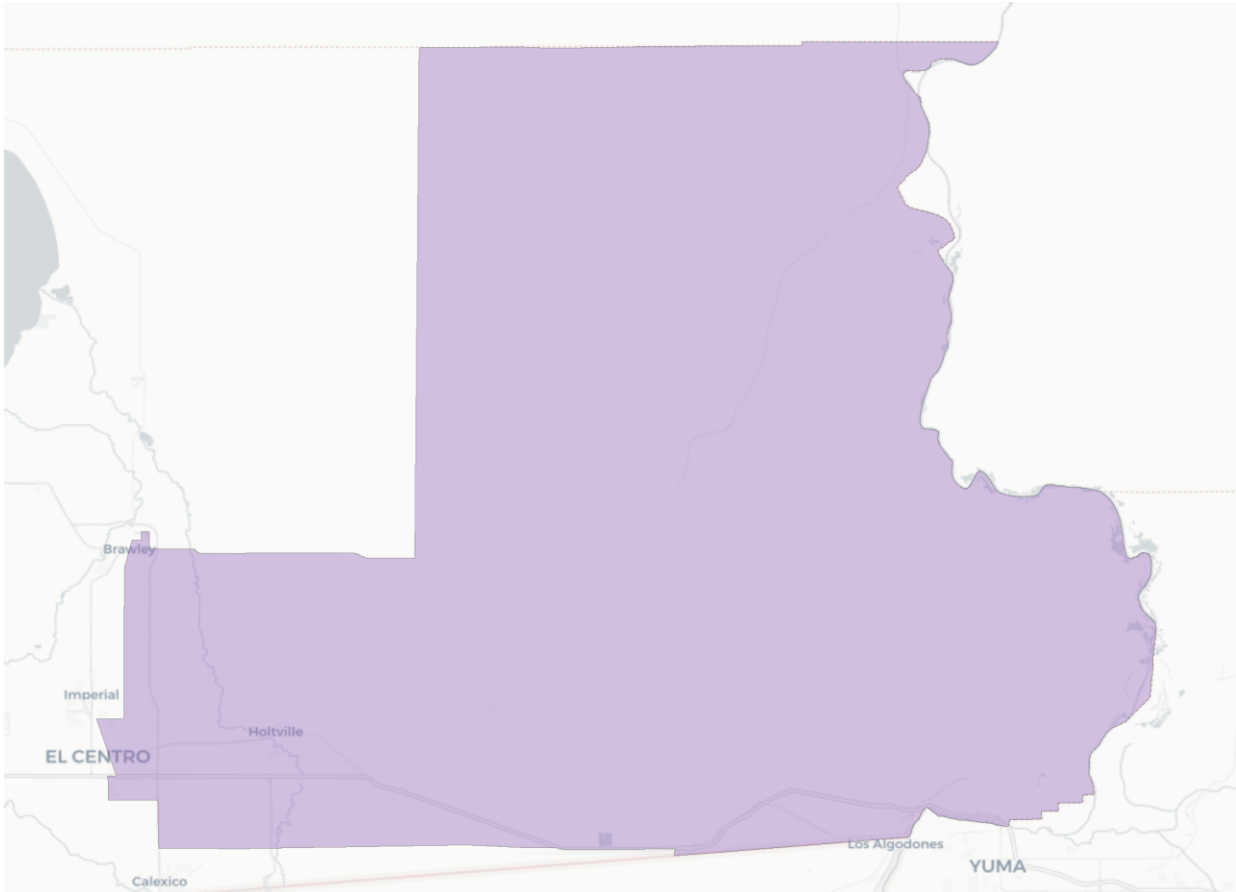
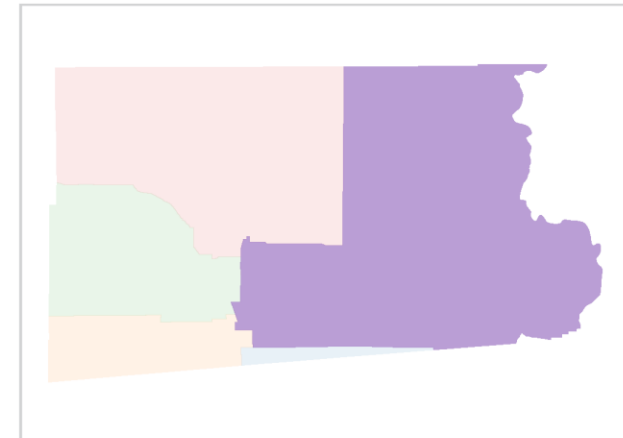
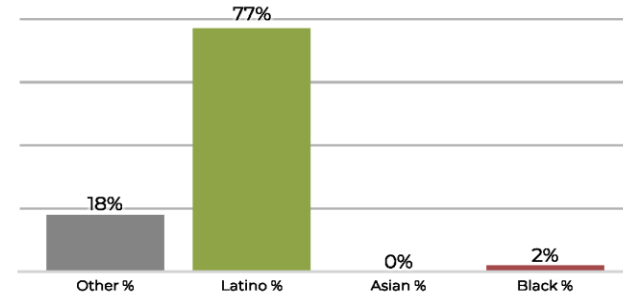
Population	Deviation	Deviation %	Other	Other %	Latino	Latino %	Asian	Asian %	Black	Black %
33,387	-1,338	-3.9%	5,772	17.3%	26,842	80.4%	313	0.9%	460	1.4%
Total CVAP	Other CVAP	Other CVAP %	Latino CVAP	Latino CVAP %	Asian CVAP	Asian CVAP %	Black CVAP	Black CVAP %		
21,346	6,484	30.4%	13,045	61.1%	225	1.1%	1,592	7.5%		

**District 5**

**2020 Census**



**Citizen Voting Age Population**



Population	Deviation	Deviation %	Other	Other %	Latino	Latino %	Asian	Asian %	Black	Black %
31,297	-3,428	-9.9%	4,928	15.7%	25,782	82.4%	260	0.8%	327	1.0%
Total CVAP	Other CVAP	Other CVAP %	Latino CVAP	Latino CVAP %	Asian CVAP	Asian CVAP %	Black CVAP	Black CVAP %		
17,472	3,306	18.9%	13,584	77.7%	94	0.5%	488	2.8%		



# From COI to Draft Maps

Getting from input to new proposed maps

Redistricting Partners needs feedback from the RAC on potential draft plan versions.

- All plans will follow the required criteria, VRA, Compactness, Contiguity, equal population, etc.
- Need feedback from the Board of Supervisors, RAC and community on potential versions.

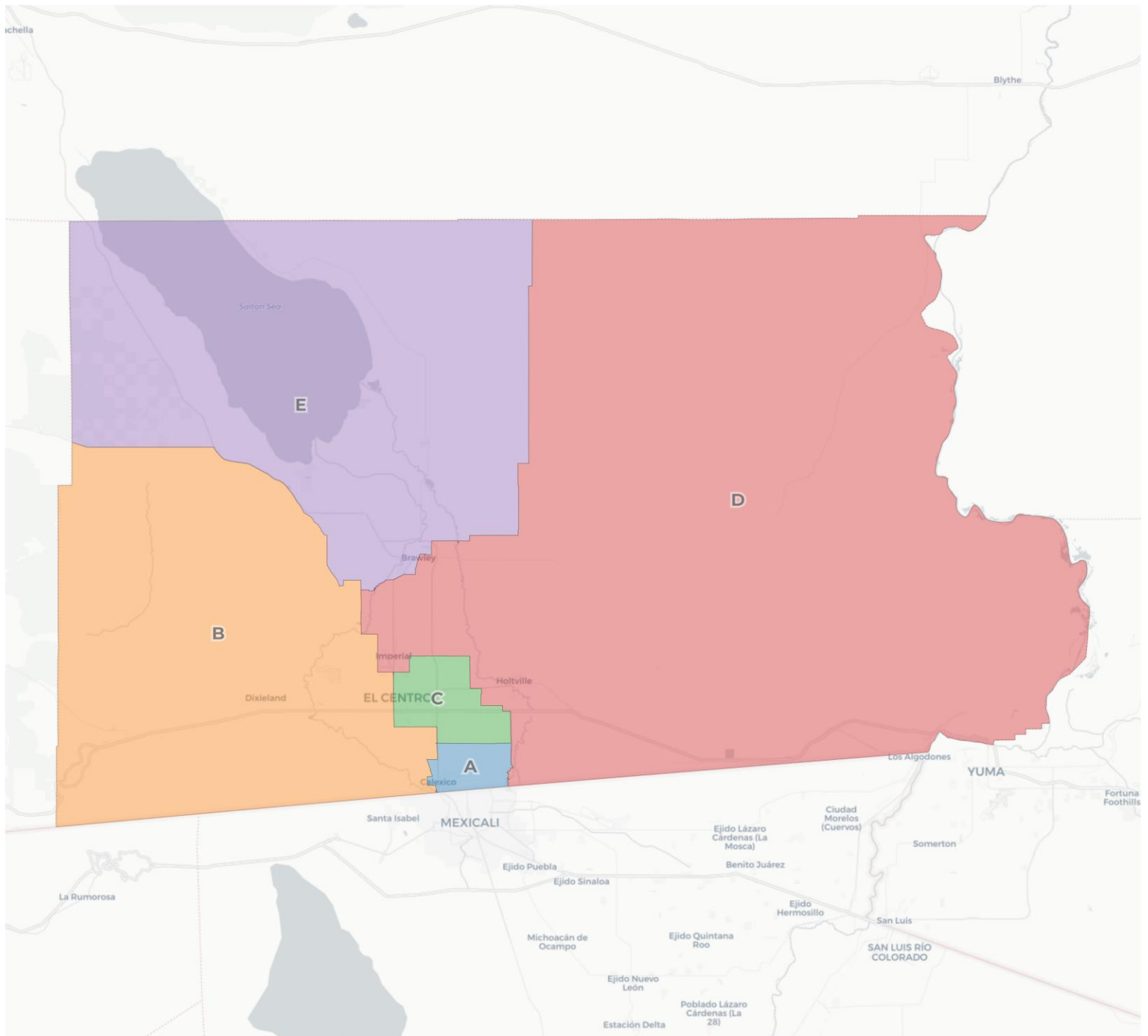
# From COI to Draft Maps

Getting from input to new proposed maps

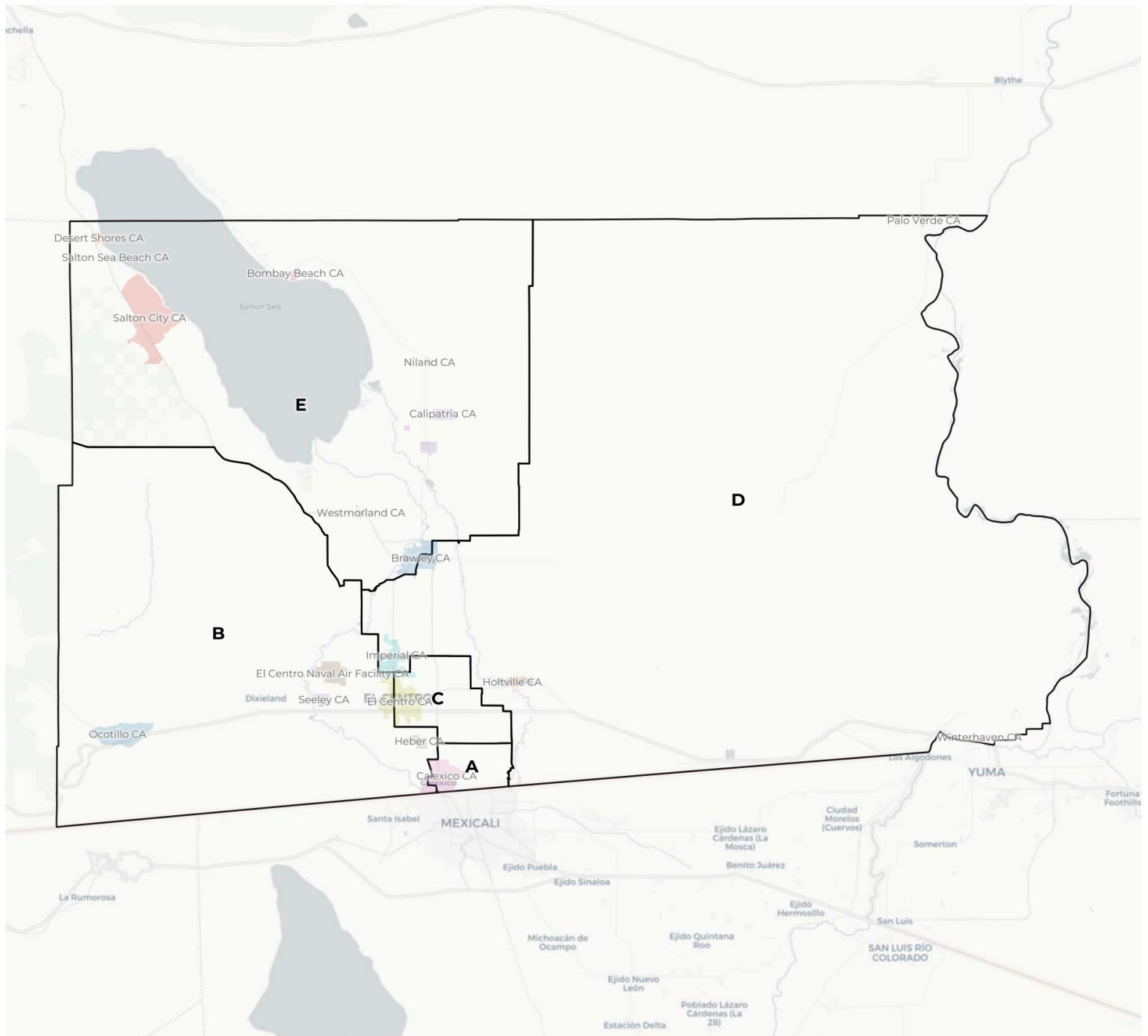
All public plans and Redistricting Partners Draft Maps will include.

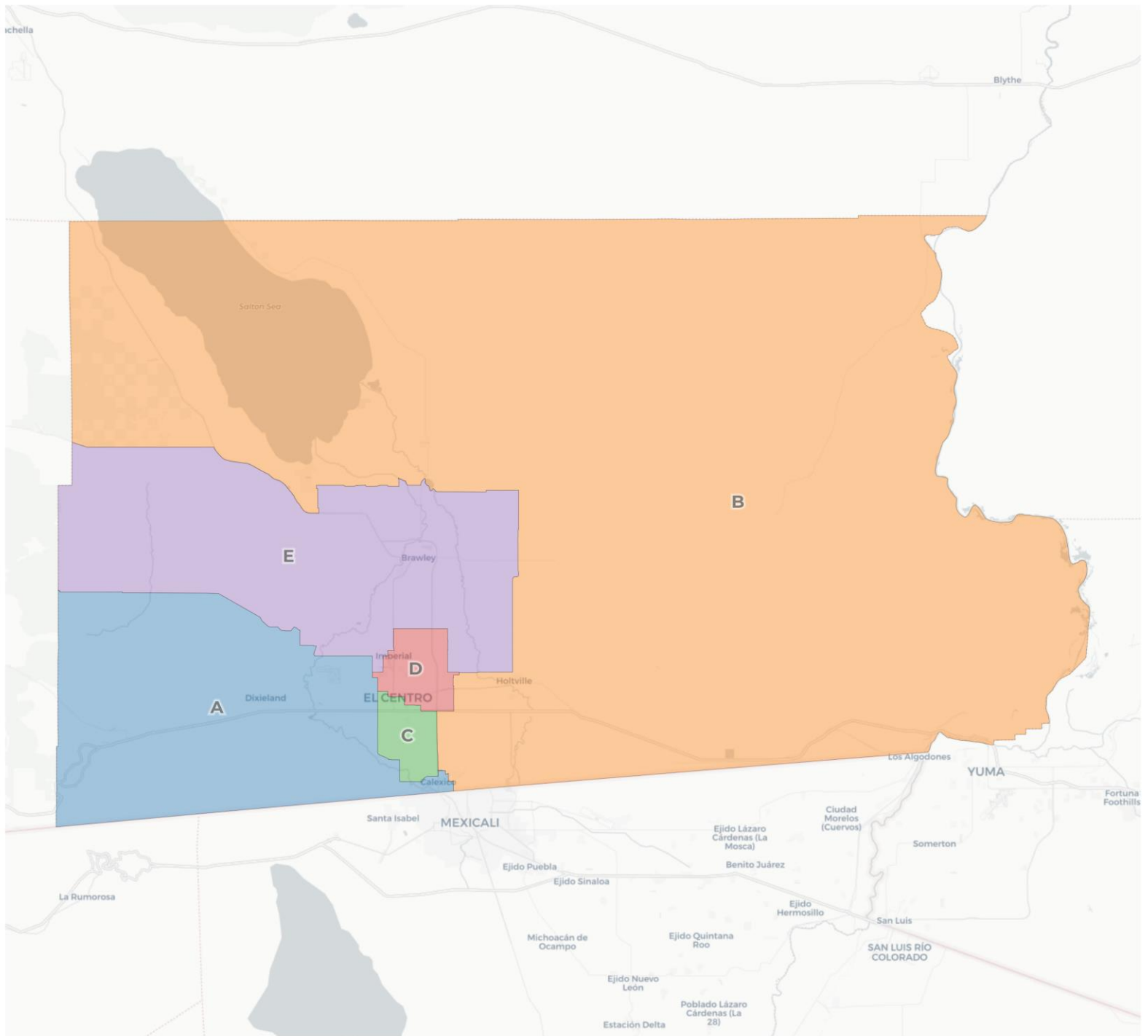
- Overview Page
- Data Tables
- Individual district pages with data

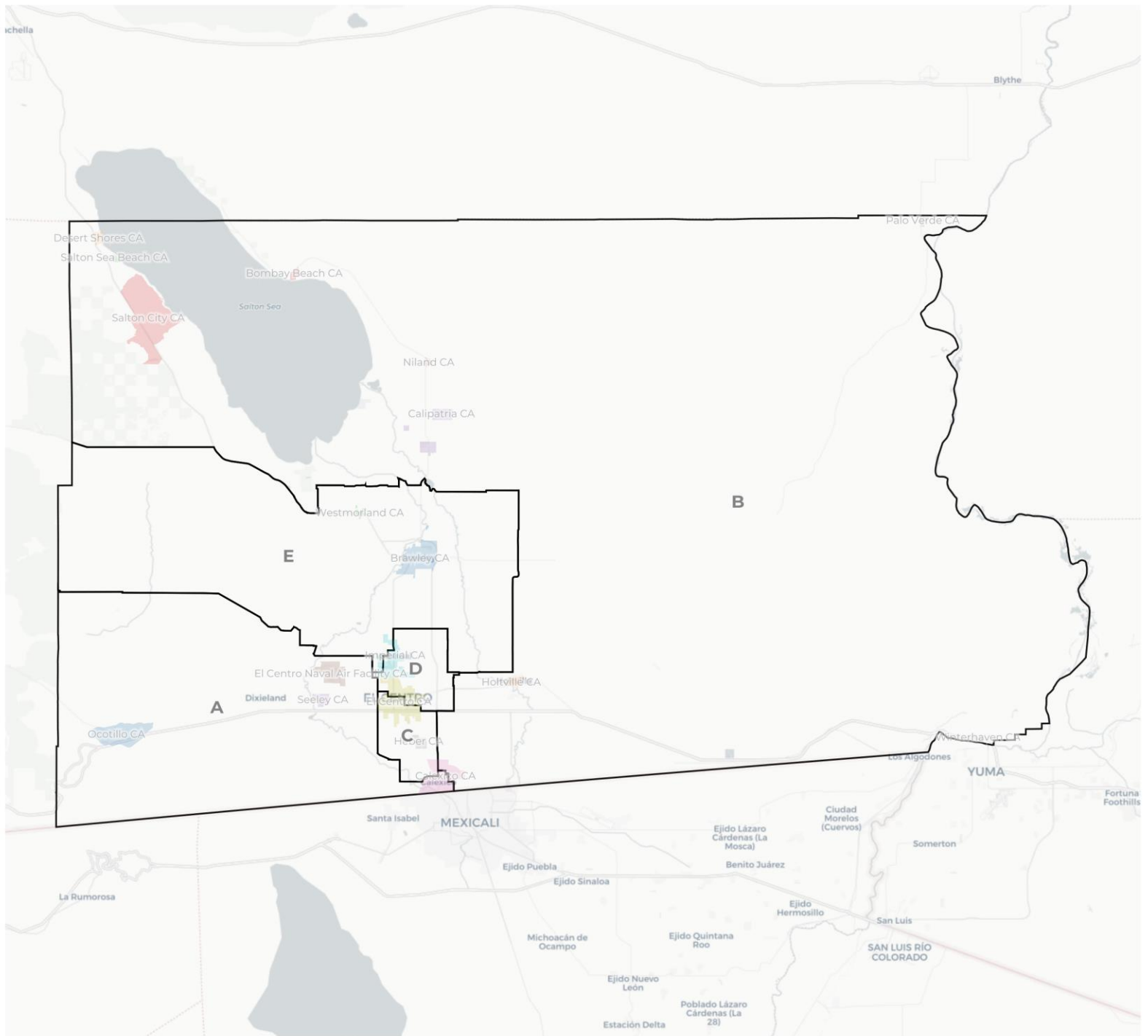


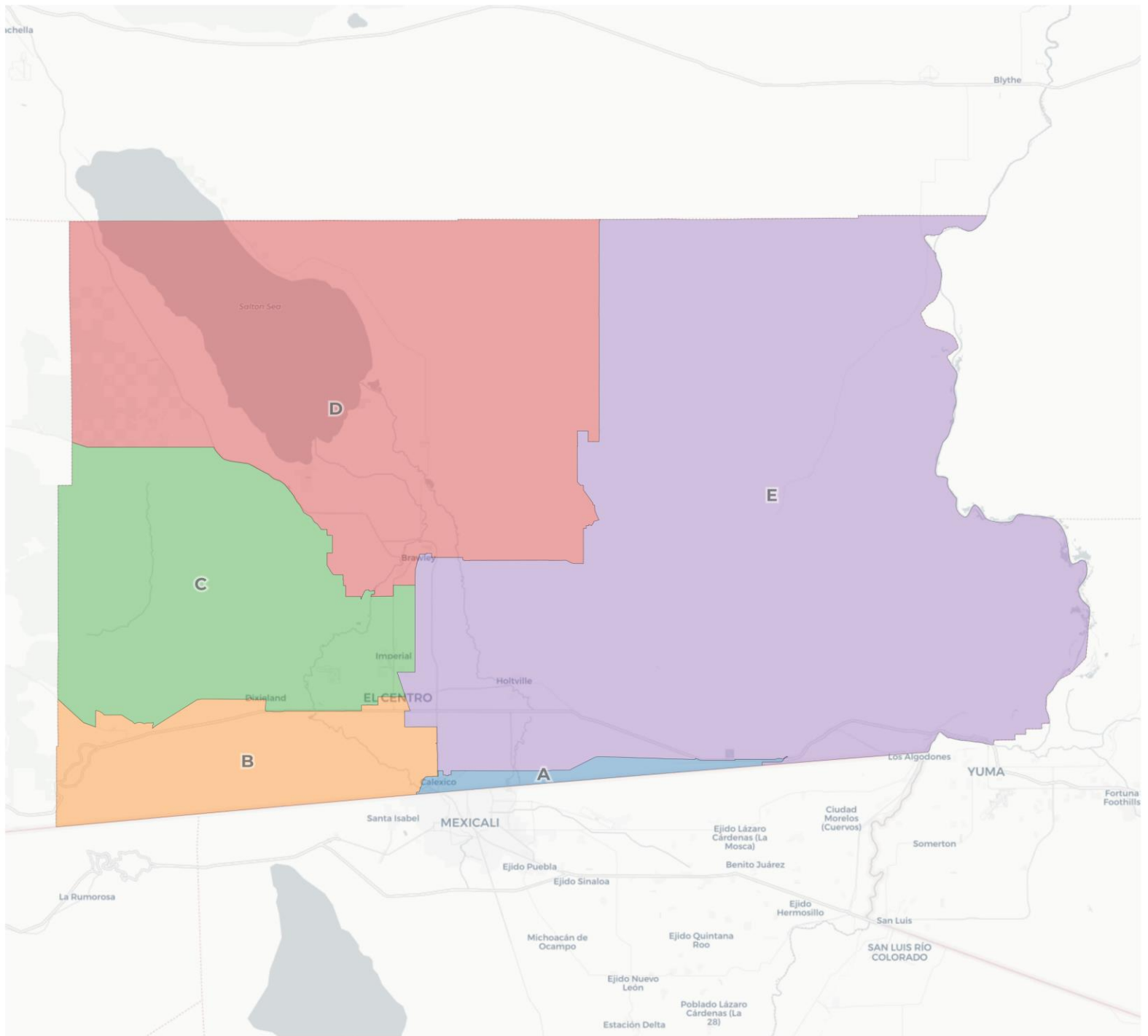


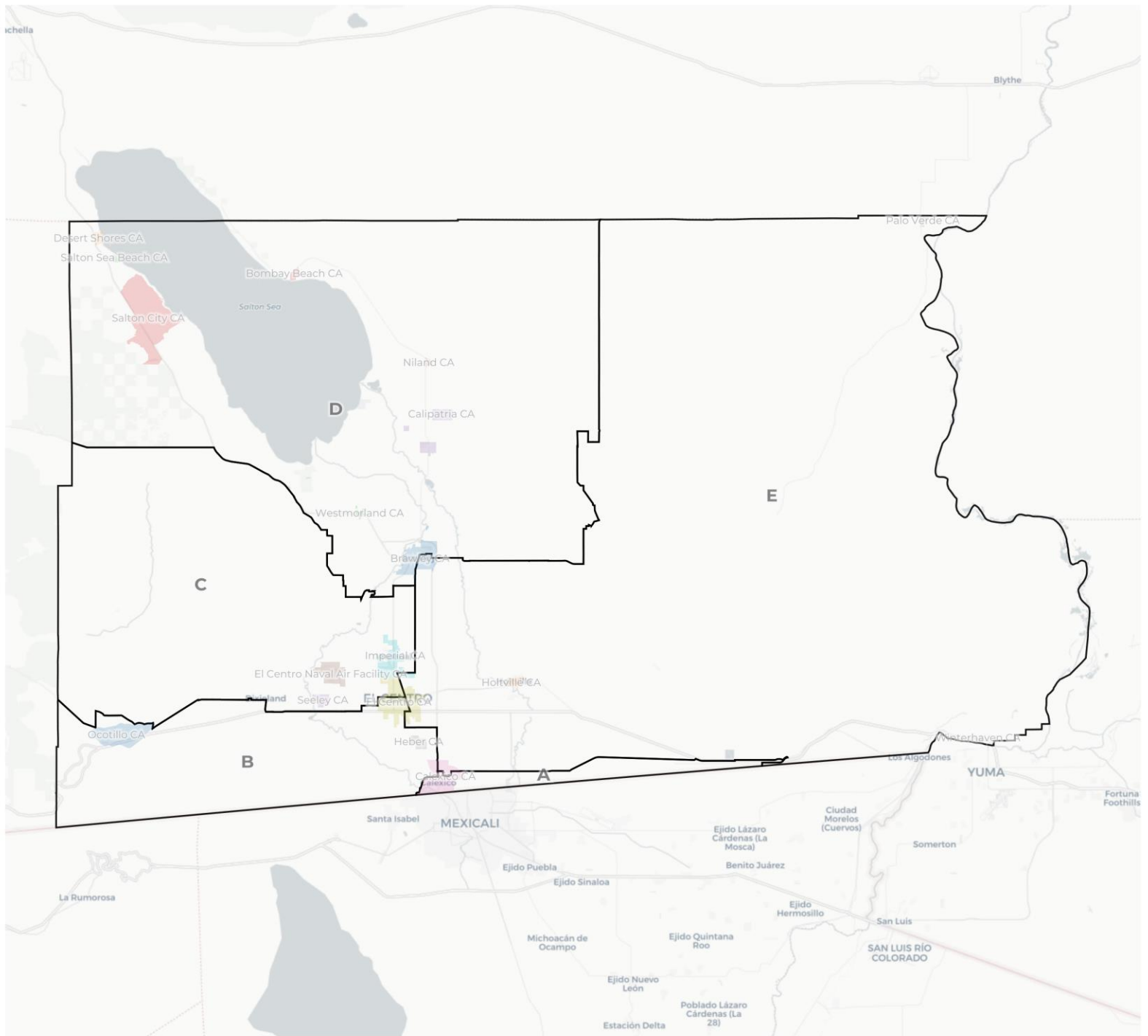
# Imperial County Draft Plan 1 with Cities













# From COI to Draft Maps

Getting from input to new proposed maps

All maps approved as “Draft” maps will be placed on redistricting website for public feedback.

- Written input
- Public comment and next hearing
- Potential map changes in DistrictR tool

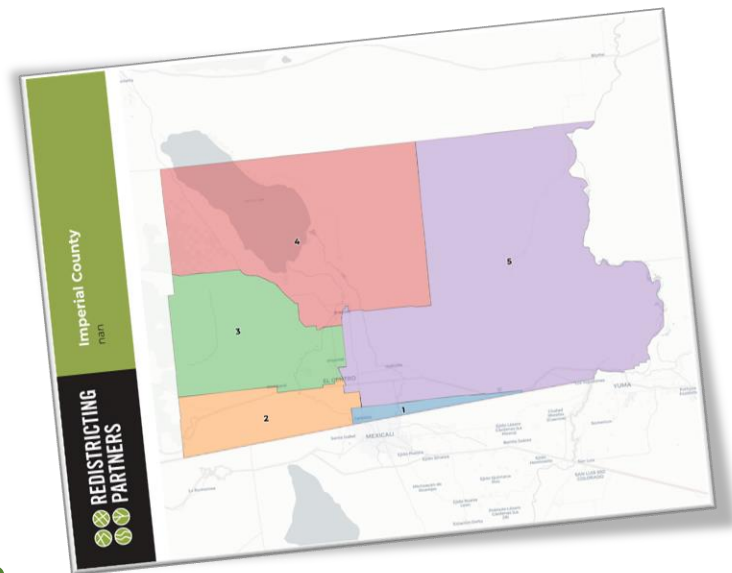


# From COI to Draft Maps

Getting from input to new proposed maps

Future hearings will allow for changes to the Drafts prior to adoption

- Hearing on draft maps
- Selection on final proposed draft with any changes
- Up/Down vote on single plan by December 15th



# Communities of Interest

## Drawing YOUR Communities of Interest

The County of Imperial is using DistrictR as a public mapping tool to allow residents to draw their own Communities of Interest and Districts.



*You draw the lines.*

[https://districtr.org/event/Imperial County](https://districtr.org/event/Imperial_County)



# REDISTRICTING PARTNERS